

Lie Symmetry Net: Preserving Conservation Laws in Modelling Financial Market Dynamics via Differential Equations

Xuelian Jiang

*School of Mathematics and Statistics
Northeast Normal University*

jiangxl133@nenu.edu.cn

Tongtian Zhu

*College of Computer Science
Zhejiang University*

raidan@zju.edu.cn

Yingxiang Xu✉

*School of Mathematics and Statistics
Northeast Normal University*

yxxu@nenu.edu.cn

Can Wang

*College of Computer Science
Zhejiang University*

wcan@zju.edu.cn

Yeyu Zhang

*School of Mathematics
Shanghai University of Finance and Economics*

zhangyeyu@mail.shufe.edu.cn

Fengxiang He

*School of Informatics
University of Edinburgh*

F.He@ed.ac.uk

Reviewed on OpenReview: <https://openreview.net/forum?id=rkfop9GyzB>

Abstract

This paper employs a novel Lie symmetries-based framework to model the intrinsic symmetries within financial market. Specifically, we introduce *Lie symmetry net* (LSN), which characterises the Lie symmetries of the differential equations (DE) estimating financial market dynamics, such as the Black-Scholes equation. To simulate these differential equations in a symmetry-aware manner, LSN incorporates a Lie symmetry risk derived from the conservation laws associated with the Lie symmetry operators of the target differential equations. This risk measures how well the Lie symmetries are realised and guides the training of LSN under the structural risk minimisation framework. Extensive numerical experiments demonstrate that LSN effectively realises the Lie symmetries and achieves an error reduction of more than *one order of magnitude* compared to state-of-the-art methods. The code is available at https://anonymous.4open.science/r/LSN_code-5608/README.md.

1 Introduction

A classic approach for modeling financial market dynamics is via stochastic differential equations (SDEs). Through the application of the Feynman-Kac formula (Del Moral & Del Moral, 2004), these SDEs can be transformed into corresponding Partial Differential Equations (PDEs), such as the Black-Scholes (BS) equation (Merton, 1973; Black & Scholes, 1973; Goodman & Stampfli, 2001; Rodrigo & Mamon, 2006). Traditionally, numerical methods such as Finite Volume Method (FVM) (Valkov, 2014) and B-spline collocation methods

(Kadalbajoo et al., 2012; Huang & Cen, 2014) are used to simulate these equations. In recent years, AI-driven methodologies, exemplified by Physics-Informed Neural Networks (PINNs) (Raissi et al., 2019), have emerged as a powerful solution for solving differential equations by utilizing collocation data, a set of scattered points within the solution domain, to fit their dynamics.

A defining characteristic of SDEs is their “symmetry”. A major family of mathematical tools to characterise the symmetry are Lie symmetry groups (Edelstein & Govinder, 2009; Paliathanasis et al., 2016; Gazizov & Ibragimov, 1998). Lie symmetries preserve the structural properties of solutions, simplifying the process of finding solutions and improving accuracy (Misawa, 2001; Kozlov, 2010; Marjanovic et al., 2015; Gaeta, 2017; Marjanovic & Solo, 2018). This principle is also applicable to the Black-Scholes (BS) equation in finance (Rao et al., 2016). Our vision is that the Lie symmetries can represent some intrinsic symmetry in financial markets, though in an abstract manner (Kozlov, 2010).

However, Lie symmetries remain largely unexplored in current AI-driven DE solvers. Neglecting this symmetry may lead AI-driven approaches to learn solutions performing well on training collocation data, yet fail to satisfy inherent structural constraints. This is caused by the imbalance or other limitations, such as the low quality of collocation data, which may compromise the generalizability of the learned solver. As a result, the performance of the learned solver on unseen data remains uncertain, as widely reported in the literature (Cohen et al., 2021; Yang et al., 2023; Li et al., 2024).

This paper endeavours to answer the following fundamental question:

Could Lie symmetries facilitate AI-driven DE solvers in simulating financial market dynamics, and how?

Motivated by this question, we design Lie symmetry net (LSN), which enables the simulation of financial market dynamics while preserving Lie symmetries.

Similar to many symmetries in physics, the Lie symmetries can be transformed into conservation laws (Kara & Mahomed, 2002; Edelstein & Govinder, 2009; Khaliq & Motsepa, 2018; Özkan et al., 2020). Specifically, for the Black-Scholes, the conservation laws derived from Lie symmetries are

$$D_t T^t + D_x T^x = 0,$$

where D represents the partial derivative with respect to time t or asset price x , and (T^t, T^x) represents the conservation vector subject to the symmetry condition (*i.e.*, Lie point symmetry operator) G , such that the action of G on the conservation vector satisfies $G(T^t, T^x) = 0$ (Kara & Mahomed, 2000; Edelstein & Govinder, 2009).

In our LSN, we design a novel *Lie conservation residual* to quantify how well the Lie symmetries are realised on one specific point in the collocation data space that comprises asset price and time. This Lie conservation residual then induces a *Lie symmetry risk* that aggregates the residual over the collocation data space, and thus characterises how Lie symmetries are realised from a global view. It is worth noting that this Lie symmetry risk depends on the specific conservation law, and thus the specific Lie symmetry operator. This Lie symmetry risk is then integrated with risk functions measuring how well the LSN fits the collocation data (Raissi et al., 2019; Xie et al., 2023), and formulates the structural risk of LSN. We can optimise the LSN under the structural risk minimisation (SRM) framework (Shawe-Taylor et al., 1998) to learn an differential equations solver while preserving the Lie symmetries.

Extensive numerical experiments are conducted to verify the superiority of LSN. We compare LSN with state-of-the-art methods including IPINNs (Bai et al., 2022b), sfPINNs (Wong et al., 2022), fPINNs (Wong et al., 2022) and LPS (Akhound-Sadegh et al., 2024). The results demonstrate that LSN consistently outperforms these methods, achieving error reductions of more than an order of magnitude. Specifically, the error magnitude with single operator reaches 10^{-3} , while with combined operators (refer to Appendix A.4), it further decreases to 10^{-4} .

The paper is structured as follows. Section 2 provides an overview of related work. Section 3 discusses the background of PINNs and SDEs. Section 4 introduces the methodology of LSN. Section 5 presents numerical experiments to validate the effectiveness of LSN. Finally, Section 6 draws conclusions and outlines directions for future research. Appendix A provides additional background, models and the theoretical analyses of LSN.

2 Related Works

Numerical Equation Solvers. Numerical methods have long been essential for solving partial differential equations in various domains, including financial market modeling. Significant progress has been made in this area with models such as the Black-Scholes equation. Traditional approaches, including finite volume methods (FVM) (Valkov, 2014) and B-spline collocation methods (Kadalbajoo et al., 2012; Huang & Cen, 2014), have been widely applied to solve these equations (Koc et al., 2003; Rao et al., 2016). These grid-based techniques rely on discretizing the spatial and temporal domains, transforming the continuous equations into discrete problems suitable for simulation. However, these methods often come with high computational complexity, which may limit their applicability.

Neural Equation Solvers. In recent years, there has been a gradual increase in applying neural networks to solve differential equations. Two main approaches have emerged in this area. The first one, neural operator methods (Li et al., 2020; Lu et al., 2021; Kovachki et al., 2023; Hao et al., 2023), focuses on learning the mapping between the input and output functions of the target equations. In contrast, the second approach, Physics-Informed Neural Networks (PINNs) (Raissi et al., 2019), directly approximates the solution of the equations, rather than relying exclusively on the values of the function derived from collocation data. PINNs and their variants, such as sPINNs (Wong et al., 2022) and fPINNs (Wong et al., 2022), have gained popularity for utilizing physical laws into the training process. Recent studies have successfully applied PINNs to solve financial equations, introducing efficient methods like IPINNs (Bai et al., 2022b), which incorporate regularization terms for slope recovery.

Input Space Symmetries. Despite significant advancements in machine learning, the inherent symmetries within input data remain underutilized. Equivariant Neural Networks (ENNs) represent an innovative architectural approach explicitly designed to encode and utilize these symmetries, resulting in the property of equivariance (Celledoni et al., 2021; Satorras et al., 2021; Gerken et al., 2023). This property enables ENNs to efficiently model data with structured invariances. In the domain of computer vision, ENNs have shown remarkable efficacy over traditional neural networks. For example, in image classification tasks, they achieve higher accuracy in recognizing objects subjected to transformations such as rotation or translation (Rojas-Gomez et al., 2024). By preserving the symmetries of input data, ENNs retain critical geometric information during feature extraction (He et al., 2021). Moreover, ENNs also exhibit exceptional performance in physical simulations by effectively modeling symmetrical transformations of physical systems (Bogatskiy et al., 2024), thereby improving both the accuracy and computational efficiency of simulations.

Parameter Space Symmetries. Over recent decades, a range of studies have analyzed symmetries in neural network parameter spaces—transformations of network parameters that leave the underlying network function unchanged (Hecht-Nielsen, 1990; Sussmann, 1992). Notable examples of such symmetries include invertible linear transformations in linear networks and rescaling transformations in homogeneous networks (Badrinarayanan et al., 2015; Du et al., 2018). Recent studies further provide deeper insights and expand the scope of parameter space symmetries. Zhao et al. (2023) investigate diverse parameter space symmetries and derive novel, nonlinear, data-dependent symmetries. Ziyin (2024) establish a systematic framework for analyzing symmetries, showing that rescaling symmetry induces sparsity, rotation symmetry leads to low-rank structures, and permutation symmetry facilitates homogeneous ensembling. Further, Ziyin et al. (2024) examines how exponential symmetries, a broad subclass of continuous symmetries, interplay with stochastic gradient descent.

Lie symmetries. While input space and parameter space symmetries have played crucial roles in neural network design, they have rarely been applied to characterize the intrinsic symmetries of differential equations. Lie symmetry analysis, in contrast, provides a systematic framework for analyzing these symmetries. It represents a significant type of symmetry with widespread applications in mathematics (Olver, 1993; Ibragimov, 1995). As a powerful tool for solving partial differential equations (PDEs), Lie symmetry method leverages the symmetry group of an equation to reduce its order or transform it into a simpler, more tractable form, thereby simplifying the solution process (Gazizov & Ibragimov, 1998; Liu et al., 2009; Oliveri, 2010). Despite its well-established theoretical foundation in traditional mathematical fields, its integration into neural DE solvers remains largely unexplored.

A more recent work by Akhound-Sadegh et al. (2024) proposes to incorporate Lie symmetries into PINNs by minimizing the residual of the determining equations of Lie symmetries. While this approach offers an interesting direction, our LSN follows a different methodology. Specifically, their Lie point symmetry (LPS) method focuses on minimizing these symmetry residuals, whereas our LSN realises Lie symmetries by preserving the conservation laws derived from the Lie symmetry operators. These conservation laws are fundamental principles inherent to the system described by the differential equations. Additionally, LPS has been validated only on the Poisson and Burgers equations in their original paper and its effectiveness in leveraging inherent symmetries in financial markets remains unclear. In contrast, our comprehensive comparative experiments in financial domain, specifically on the BS equation across various parameters, clearly demonstrate the superiority of LSN over LPS by reducing testing error by an order of magnitude.

3 Preliminaries

This section provides the essential background knowledge. We begin with an introduction to Physics-Informed Neural Networks. We then cover stochastic differential equations and explain how the Feynman-Kac formula allows for the transformation of a SDE into a corresponding PDE. To concretize this theoretical framework, we provide illustrative examples including the Black-Scholes equation. For further terminology and models related to finance and Lie symmetries, such as the Vařiček equation, please refer to Appendix A.

3.1 Physics-Informed Neural Networks (PINNs)

PINNs integrate physical information from the equations to approximate numerical solutions of PDEs, rather than relying exclusively on collocation data. The use of PINNs to solve differential equations typically begins with generating a collocation dataset $\mathcal{S} = \left\{ \{(x_i^n, t_i^n)\}_n^{N_i}, \{(x_s^n, t_s^n)\}_n^{N_s}, \{x_t^n\}_n^{N_t} \right\}$ by randomly sampling points within the solution domain. To understand how PINNs operate, consider the following general form of partial differential equation,

$$\begin{cases} \frac{\partial u(x,t)}{\partial t} = \mathbf{L}[u] & \forall (x,t) \in \Omega \times [0, T], \\ u(x,0) = \varphi(x) & \forall x \in \Omega, \\ u(y,t) = \psi(y,t) & \forall (y,t) \in \partial\Omega \times [0, T], \end{cases} \quad (1)$$

where $\mathbf{L}[u]$ represents a differential operator, Ω denotes a bounded domain, $\varphi(x)$ and $\psi(y,t)$ correspond to the initial and boundary conditions, respectively, T refers to the terminal time, and $u(x,t)$ is the function to be determined. To solve Equation (1), PINNs approximate the exact solution by modeling u as a neural network \hat{u} and minimizing an empirical loss function.

$$\hat{\mathcal{L}}_{PINNs} = \frac{1}{N_i} \sum_{n=1}^{N_i} \left| \frac{\partial \hat{u}_\theta(x_i^n, t_i^n)}{\partial t} - \mathbf{L}[\hat{u}](x_i^n, t_i^n) \right|^2 + \frac{1}{N_b} \sum_{n=1}^{N_b} |\hat{u}_\theta(x_b^n, t_b^n) - \psi(x_b^n, t_b^n)|^2 + \frac{1}{N_t} \sum_{n=1}^{N_t} |\hat{u}_\theta(0, x_t^n) - \varphi(x_t^n)|^2,$$

where θ denotes the network parameters. The first term evaluates the residual of the PDE, while the subsequent terms quantify the errors associated with the boundary and initial conditions, respectively.

3.2 Stochastic Differential Equation (SDE)

SDE (Øksendal & Øksendal, 2003) provide a mathematical framework for modeling systems influenced by random disturbances. To understand the dynamics of a stochastic process X_t , we consider the SDE of the following general form

$$dX_t = \mu(X_t, t)dt + \sigma(X_t, t)dW_t, \quad (2)$$

where X_t represents the stochastic variable of interest and W_t is a standard Wiener process (as defined in Definition A.1). The functions $\mu(X_t, t)$ and $\sigma(X_t, t)$, known as the drift and diffusion coefficients, respectively, are functions that characterise the deterministic and stochastic components of the dynamics.

The Feynman-Kac formula provides a critical theoretical framework to establish a connection between certain types of PDEs and SDEs (see Definition A.5). We illustrate this with a representative example from finance.

Example (Black-Scholes equation (Janson & Tysk, 2006)). Considering a frictionless and arbitrage-free financial market comprising a risk-free asset and a unit risky asset, the dynamics of the market can be modeled by the following SDE:

$$dx_t = rx_t dt + \sigma x_t dW_t, \quad (3)$$

where x denotes the price of a unit risky asset, t represent time, σ is the volatility, r is the risk-free interest rate and W_t is a standard Wiener process (refer to Definition A.1). Applying the Feynman-Kac formula, the Black-Scholes equation for evaluating the price $u(x, t)$ of a European call option (refer to Definition A.2) is derived as follows:

$$\begin{cases} \frac{\partial u}{\partial t} + \frac{1}{2}\sigma^2 x^2 \frac{\partial^2 u}{\partial x^2} + rx \frac{\partial u}{\partial x} - ru = 0 & \Omega \times [0, T], \\ u(x, T) = \max(x - K, 0) & \Omega \times T, \\ u(0, t) = 0 & \partial\Omega \times [0, T], \end{cases} \quad (4)$$

where K is the strike price, T is the expiry time of the contract and Ω is a bounded domain. The solution to this equation can be written as follows (Bai et al., 2022b):

$$u(x, t) = x\mathcal{N}(d_1) - K \exp^{-r(T-t)} \mathcal{N}(d_2), \quad d_1 = \frac{\ln(x/K) + (r + 0.5\sigma^2)(T-t)}{\sigma\sqrt{T-t}}, \quad d_2 = d_1 - \sigma\sqrt{T-t},$$

where \mathcal{N} denotes the standard normal distribution.

3.3 Lie Group Analysis

Groups, which mathematically characterize symmetries, describe transformations that preserve certain invariances. Formally, a group (G, \cdot) is defined as a set G equipped with a binary operation \cdot that satisfies the properties of associativity, contains an identity element $e \in G$, and ensures the existence of an inverse element g^{-1} for each $g \in G$ (Rotman, 2012). When groups are also differentiable manifolds, they are referred to as Lie groups, which are crucial in analyzing continuous symmetries (Knapp & Knapp, 1996). Lie group analysis provides a powerful tool for studying symmetry, conservation laws, and dynamic systems of equations (Gazizov & Ibragimov, 1998; Paliathanasis et al., 2016). The goal of Lie group analysis is to identify the symmetries of an equation, especially those transformations under Lie group actions that leave the equation invariant. These symmetries facilitates conservation law derivation (Edelstein & Govinder, 2009), simplifies solutions, and lowers computational complexity (Rao et al., 2016; Khalique & Motsepa, 2018).

4 Lie Symmetry Net

In this section, we introduce Lie symmetry net (LSN). In Section 4.1, we briefly derive the corresponding conservation law from the Lie symmetry operators of the target equations, which in turn lead to the Lie symmetry risk of LSN. In Section 4.2, we discuss the structure risk minimization of Lie Symmetry Net based on the Lie symmetry risk.

4.1 Lie Symmetries in Equations

This subsection presents the Lie symmetry operators for the Black-Scholes equation, and derive the corresponding conservation laws, which allows us to define the associated Lie symmetry risk.

Lie Symmetry Operator. Lie symmetry operator is a major mathematical tool for characterizing the symmetry in PDEs (see Definition A.3) (Paliathanasis et al., 2016). The Lie symmetry operators (Gazizov & Ibragimov, 1998; Edelstein & Govinder, 2009) of BS Equation (4) are given by the vector field

$$\begin{aligned} G_\phi &= \phi(t, x) \frac{\partial}{\partial u}, \quad G_1 = \frac{\partial}{\partial t}, \quad G_2 = x \frac{\partial}{\partial x}, \quad G_3 = u \frac{\partial}{\partial u}, \\ G_4 &= 2t \frac{\partial}{\partial t} + (\ln x + Zt)x \frac{\partial}{\partial x} + 2rtu \frac{\partial}{\partial u}, \quad G_5 = \sigma^2 tx \frac{\partial}{\partial x} + (\ln x - Zt)u \frac{\partial}{\partial u}, \\ G_6 &= 2\sigma^2 t^2 \frac{\partial}{\partial t} + 2\sigma^2 tx \ln x \frac{\partial}{\partial x} + ((\ln x - Zt)^2 + 2\sigma^2 rt^2 - \sigma^2 t) u \frac{\partial}{\partial u}, \end{aligned} \quad (5)$$

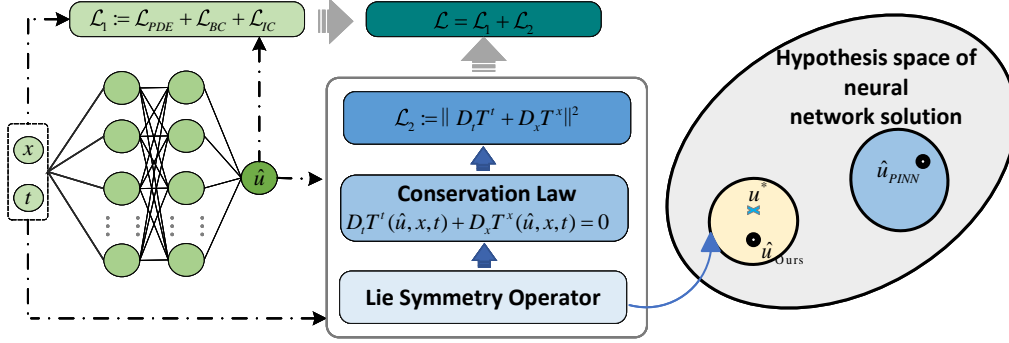


Figure 1: Schematic Diagram of Lie Symmetry Network Architecture. **Left:** The incorporation of a Lie symmetries blocks into a PINN architecture. **Right:** The hypothesis space of PINN, denoted as \hat{u}_{PINN} (blue circle), is a subset of the broader neural network solution space (gray circle). u^* represents the exact solution. The yellow circle signifies the hypothesis space that satisfies symmetry conditions. The incorporation of Lie symmetries blocks produces our solution \hat{u}_{Ours} . In simpler terms, being closer to the space where the exact solution exists leads to fewer errors. The non-intersection between “ \hat{u}_{PINN} ” and “ \hat{u}_{Ours} ” in the figure is a specific case provided to enhance clarity in our exposition.

where $Z = r - \sigma^2/2$, $\phi(t, x)$ is an arbitrary solution to Equation (4) without any boundary condition or initial condition. The first symmetry G_ϕ is an infinite-dimensional symmetry, arising as a consequence of linearity. These Lie symmetry operators form an infinite Lie group vector space (Edelstein & Govinder, 2009).

These Lie symmetry operators not only provide a deeper insight into the structure of the PDEs but also form the foundation for deriving conservation laws associated with these equations.

Conservation Law. Similar to many symmetries in physics, the Lie symmetries can be transformed to conservation laws (Kara & Mahomed, 2002; Edelstein & Govinder, 2009; Khalique & Motsepa, 2018; Özkan et al., 2020). In this paper, we interpret the Lie symmetry point operators as the following conservation laws: regardless of how the space x , time t , and exact solution u vary, the conservation vector (T^t, T^x) corresponding to the Lie point symmetry remains zero, *i.e.*,

$$D_t T^t(u, x, t) + D_x T^x(u, x, t) = 0, \quad (6)$$

where the D represents the partial derivative with respect to time t or space x , and (T^t, T^x) represents the conservation vector subject to the symmetry condition (*i.e.*, Lie point symmetry operator) G , such that the action of G on the conservation vector satisfies $G(T^t, T^x) = 0$ (Edelstein & Govinder, 2009). It is worth noting that this Lie symmetry risk depends on the specific conservation law.

We can derive the conservation law of the operator G_2 (see Equation (5)) of BS equation as follows (Edelstein & Govinder, 2009):

$$\begin{cases} T_2^t(u, x, t) = -\frac{\partial u}{\partial x} l(t) + \frac{\mathcal{A}}{x} + \frac{2\mathcal{B}u}{\sigma^2 x} e^{-rt}, \\ T_2^x(u, x, t) = \frac{\partial u}{\partial t} l(t) + u \frac{\partial l(t)}{\partial t} + g(t) - \mathcal{B}u e^{-rt} + \mathcal{B} \left(\frac{\partial u}{\partial x} + \frac{2ru}{\sigma^2 x} \right) x e^{-rt}, \end{cases} \quad (7)$$

where \mathcal{A} and \mathcal{B} are arbitrary constants, and $l(t)$ and $g(t)$ are arbitrary functions with respect to t . Unless stated otherwise, consider $\mathcal{A} = \mathcal{B} = 1$, $l(t) = t$, and $g(t) = t^2$.

We can then define the Lie conservation residual \mathcal{R}_{Lie} according to Equation (6) to evaluate the extent to which the Lie symmetries are realised at a specific point in the collocation data space.

Definition 4.1 (Lie conservation residual). Combining the Lie symmetry operator and the conservation law, we define the Lie conservation residual of \hat{u} as follows:

$$\mathcal{R}_{Lie}[\hat{u}] = D_t T^t(\hat{u}) + D_x T^x(\hat{u}), \quad (8)$$

where the D represents the partial derivative with respect to t or x , and (T^t, T^x) represents the conservation vector subject to the symmetry condition G .

We can aggregate the Lie symmetries residuals over the entire collocation data space to obtain the Lie symmetry risk, which characterises the degree to which the Lie symmetries are realised from a global perspective.

Definition 4.2 (Lie symmetry risk). According to the expression in Equation (8), the definition of Lie symmetry risk is provided as follows:

$$\mathcal{L}_{Lie}[\hat{u}_\theta](x, t) = \int_{\Omega \times [0, T]} |\mathcal{R}_{Lie}[\hat{u}_\theta](x, t)|^2 dx dt,$$

where \hat{u}_θ denotes the network output, and θ denotes the network parameters.

Remark 4.3. The Lie symmetry risk \mathcal{L}_{Lie} focuses solely on learning the symmetry of the problem without taking into account the underlying physical laws of the problem.

This Lie symmetry risk is defined over the collocation data distribution, which is unknown in practice. We thus define the *Empirical Lie symmetry risk* $\hat{\mathcal{L}}_{Lie}$ as an approximation of the Lie symmetry risk \mathcal{L}_{Lie} ,

Definition 4.4 (Empirical Lie symmetry risk). Summing up the Lie symmetry operators at N_i discrete points provides an approximation to the Lie symmetry risk.

$$\hat{\mathcal{L}}_{Lie}(\theta, \mathcal{S}) := \frac{1}{N_i} \sum_{n=1}^{N_i} |\mathcal{R}_{Lie}[\hat{u}_\theta](x_i^n, t_i^n)|^2, \quad (9)$$

where $\mathcal{S} = \{(x_i^n, t_i^n)\}_{n=1}^{N_i}$ represents the set of these N_i discrete points.

4.2 Structure Risk Minimisation

In this subsection, we present the structure risk minimization of LSN based on the Lie symmetry risk. For clarity, we reformulate the Black-Scholes Equation (4) to match the format of Equation (1) (see Appendix A.2), aligning it with the Vaříček Equation (24) in the Appendix A.3 for a coherent presentation, where

$$\mathbf{L}[u] := \frac{1}{2} \sigma(x)^2 \frac{\partial^2 u(x, t)}{\partial x^2} + \mu(x) \frac{\partial u(x, t)}{\partial x} + v(x) u(x, t), \quad (10)$$

is a differential operator with respect to three bounded affine functions $\sigma(x)$, $\mu(x)$ and $v(x)$ (for BS equation: $\sigma(x) = \sigma x$, $\mu(x) = rx$, $v(x) = -r$ and $\varphi(x) = \max(x - K, 0)$ (for Vaříček Equation (24) $\sigma(x) = \sqrt{2\alpha} = \sigma$, $\mu(x) = \lambda(\beta - x) = -x$, $v(x) = \gamma x$ and $\varphi(x) = 1$).

Data Fitting Residuals. The following functions \mathcal{R}_j ($j = \{i, s, t\}$) characterise how well the LSN is fitting the collocation data according to Equation (1), for $\forall \hat{u} \in C^2(\mathbb{R}^d)$

$$\begin{aligned} \mathcal{R}_i[\hat{u}](x, t) &= \frac{\partial \hat{u}(x, t)}{\partial t} - \mathbf{L}[\hat{u}](x, t) & (x, t) \in \Omega \times [0, T], \\ \mathcal{R}_s[\hat{u}](y, t) &= \hat{u}(y, t) - \psi(y, t) & (y, t) \in \partial\Omega \times [0, T], \\ \mathcal{R}_t[\hat{u}](x) &= \hat{u}(0, x) - \varphi(x) & x \in \Omega. \end{aligned} \quad (11)$$

We subsequently define the population risk \mathcal{L}_1 to fit the collocation data, utilizing the aforementioned "residuals" as follows:

$$\begin{aligned} \mathcal{L}_1[\hat{u}_\theta](x, t) &= \mathcal{L}_{PDE}[\hat{u}_\theta](x, t) + \mathcal{L}_{BC}[\hat{u}_\theta](x, t) + \mathcal{L}_{IC}[\hat{u}_\theta](x, t) \\ &:= \int_{\Omega \times [0, T]} |\mathcal{R}_i[\hat{u}_\theta](x, t)|^2 dx dt + \int_{\partial\Omega \times [0, T]} |\mathcal{R}_s[\hat{u}_\theta](x, t)|^2 dx dt + \int_{\Omega} |\mathcal{R}_t[\hat{u}_\theta](x)|^2 dx. \end{aligned} \quad (12)$$

Similarly, this population risk is defined over the collocation data distribution, which is unknown in practice. We thus resort to defining the empirical loss function $\hat{\mathcal{L}}_1$ to approximate the population risk as follows,

$$\begin{aligned}\hat{\mathcal{L}}_1[\hat{u}_\theta](x, t) &= \hat{\mathcal{L}}_{PDE}[\hat{u}_\theta](x, t) + \hat{\mathcal{L}}_{BC}[\hat{u}_\theta](x, t) + \hat{\mathcal{L}}_{IC}[\hat{u}_\theta](x, t) \\ &:= \frac{1}{N_i} \sum_{n=1}^{N_i} |\mathcal{R}_i[\hat{u}_\theta](x_i^n, t_i^n)|^2 + \frac{1}{N_s} \sum_{n=1}^{N_s} |\mathcal{R}_s[\hat{u}_\theta](x_s^n, t_s^n)|^2 + \frac{1}{N_t} \sum_{n=1}^{N_t} |\mathcal{R}_t[\hat{u}_\theta](x_t^n)|^2.\end{aligned}$$

Here $\mathcal{S} = \left\{ \{(x_i^n, t_i^n)\}_n^{N_i}, \{(x_s^n, t_s^n)\}_n^{N_s}, \{x_t^n\}_n^{N_t} \right\}$ is the collocation data set by Gaussian sampling within $\Omega \times [0, T]$.

Remark 4.5. \mathcal{L}_1 essentially corresponds to the Physics-Informed Neural Networks (PINNs) (please refer to Section 3), which accurately estimates the majority of the training collocation data based on the inherent physical laws of the problem. However, it does not explicitly consider the symmetry within.

Structural Risk of LSN. Eventually, we can define the structure risk $\mathcal{E}(\theta)$ of LSN as follows.

Definition 4.6 (Structure risk of LSN). The structure risk of LSN is defined as follows

$$\begin{aligned}\mathcal{E}(\theta) &:= \lambda_1 \mathcal{L}_{PDE}[\hat{u}_\theta](x, t) + \lambda_2 \mathcal{L}_{BC}[\hat{u}_\theta](x, t) + \lambda_3 \mathcal{L}_{IC}[\hat{u}_\theta](x, 0) + \lambda_4 \mathcal{L}_{Lie}[\hat{u}_\theta](x, t) \\ &:= \lambda \mathcal{L}_1[\hat{u}_\theta](x, t) + \lambda_4 \mathcal{L}_2[\hat{u}_\theta](x, t).\end{aligned}\tag{13}$$

Here, $\lambda \mathcal{L}_1 := \lambda_1 \mathcal{L}_{PDE} + \lambda_2 \mathcal{L}_{BC} + \lambda_3 \mathcal{L}_{IC}$ is defined as in Equation (12), $\mathcal{L}_2 := \mathcal{L}_{Lie}$ in Definition 4.2, and λ_i ($i = 1, \dots, 4$) are the hyperparameters.

Remark 4.7. The structural loss of LSN synergistically integrates \mathcal{L}_1 and \mathcal{L}_2 , aiming to learn both the inherent physical laws of the problem and its symmetry, ensuring a comprehensive understanding within the framework of the problem.

Correspondingly, we provide an empirical approximation of the structural risk of LSN as follows.

Definition 4.8 (Empirical risk of LSN). The empirical loss of LSN is defined as follows

$$\hat{\mathcal{E}}(\theta, \mathcal{S}) := \lambda_1 \hat{\mathcal{L}}_{PDE}(\theta, \mathcal{S}_i) + \lambda_2 \hat{\mathcal{L}}_{BC}(\theta, \mathcal{S}_s) + \lambda_3 \hat{\mathcal{L}}_{IC}(\theta, \mathcal{S}_t) + \lambda_4 \hat{\mathcal{L}}_{Lie}(\theta, \mathcal{S}_i),\tag{14}$$

where $\mathcal{S} = \left\{ \mathcal{S}_i \{(x_i^n, t_i^n)\}_n^{N_i}, \mathcal{S}_s \{(x_s^n, t_s^n)\}_n^{N_s}, \mathcal{S}_t \{x_t^n\}_n^{N_t} \right\}$ are the training collocation data sets.

We train LSN by solving the following minimisation problem,

$$\theta^* = \arg \min_{\theta} \lambda_1 \hat{\mathcal{L}}_{PDE}(\theta, \mathcal{S}_i) + \lambda_2 \hat{\mathcal{L}}_{BC}(\theta, \mathcal{S}_s) + \lambda_3 \hat{\mathcal{L}}_{IC}(\theta, \mathcal{S}_t) + \lambda_4 \hat{\mathcal{L}}_{Lie}(\theta, \mathcal{S}_i),$$

and the minimum \hat{u}_{θ^*} corresponds to the well-trained LSN.

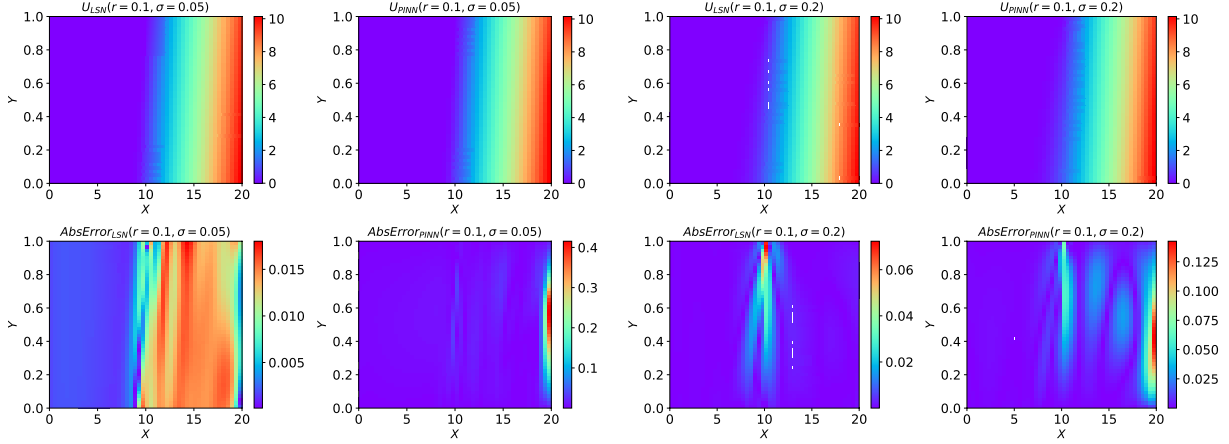
5 Experiments

In this section, we conduct three main experiments. In Section 5.1, we perform an ablation study on LSN, comparing it to PINNs (Raissi et al., 2019) under different equation parameters and using large-scale collocation data to show LSN's performance improvement over the baseline. In Section 5.2, we evaluate LSN against baseline algorithms like IPINNs (Bai et al., 2022b), sfPINNs (Wong et al., 2022), fPINNs (Wong et al., 2022), and LPS (Akhound-Sadegh et al., 2024), validating LSN's superior performance. We start by providing a brief introduction to the parameter settings for all experiments, with specific parameters for each experiment detailed in their respective sections.

Data. The small-scale experiments employ a training set 50 internally scattered points and 2000 points randomly placed at the boundaries, while the test set consists of 2,500 (or 200) uniformly sampled points. The large-scale experiments employ a training set of 2000 internally scattered points and 8000 points randomly placed at the boundaries, while the test set consists of 2,500 (or 200) uniformly sampled points.

Table 1: Experimental Parameter Configuration. Values in parentheses represent weights for the enlarged collocation data set, while values not in parentheses represent weights for the small collocation data set.

RFR (r)	volatility (σ)	weight				learning rate (lr)	iteration
		λ_1	λ_2	λ_3	λ_4		
0.1	0.4	0.001(0.001)	1(1)	0.1(0.1)	1(0.1)	0.001	200,000
0.1	0.5	0.001(0.0001)	1(1)	0.1(0.1)	10(0.01)	0.001	200,000
0.11	0.4	0.001(0.001)	1(1)	0.1(0.1)	1(1)	0.001	200,000

Figure 2: Visual representations of numerical solutions obtained using LSN and PINNs, along with absolute errors compared to the exact solution. The configuration of parameters is as follows: (1) $r = 0.1$, $\sigma = 0.05$, $\Gamma = 0.99$, and $Iterations = 50,000$ (the left two column); (2) $r = 0.1$, $\sigma = 0.2$, $\Gamma = 0.95$, and $Iterations = 90,000$ (the right column).

Neural Architecture and Optimiser. The LSN network employs a fully connected architecture, consisting of 9 layers with each layer having a width of 50 neurons. The tanh function is used as the activation function. For optimization, we choose Adam with an initial learning rate of 0.001 and a learning rate decay factor Γ .

Equation Parameters. For the parameters of the Black-Scholes equation, we set them to $K = 10$, $x \in [0, 20]$, and $t \in [0, 1]$, following the conventions established in the existing literature (Bai et al., 2022a).

Evaluation. The evaluation metrics include relative test error (refer to the definition in Section Definition A.4) and conservation error $\hat{\mathcal{L}}_{Lie}$.

5.1 Comparison with PINNs

Experimental Design. We conduct comparative experiments between LSN and baseline PINNs under the following four sets of hyperparameter setups.

For the first configuration, we chose $r = 0.1$, $\sigma = 0.05$, a learning rate decay rate $\Gamma = 0.99$, and $Iterations = 50,000$, the weight for LSN’s loss function was set as $\lambda_1 = 0.001$, $\lambda_2 = 1 - \lambda_1 = 0.999$, $\lambda_3 = 0.001$ and $\lambda_4 = 0.001$, while for PINNs, the weight was set as $\lambda_1 = 0.001$, $\lambda_2 = 0.999$ and $\lambda_3 = 0.001$. For the second configuration, we select $r = 0.1$, $\sigma = 0.2$, a learning rate decay rate of $\Gamma = 0.95$, and $Iterations = 90,000$. The weights for the loss functions remains the same as the first configuration. For the third setting, the experimental parameter settings for the small collocation dataset under other parameters are given in the Table 1. Regarding the fourth setting, the experimental parameter settings for the enlarged collocation data set are provided in the Table 1, with values in parentheses.

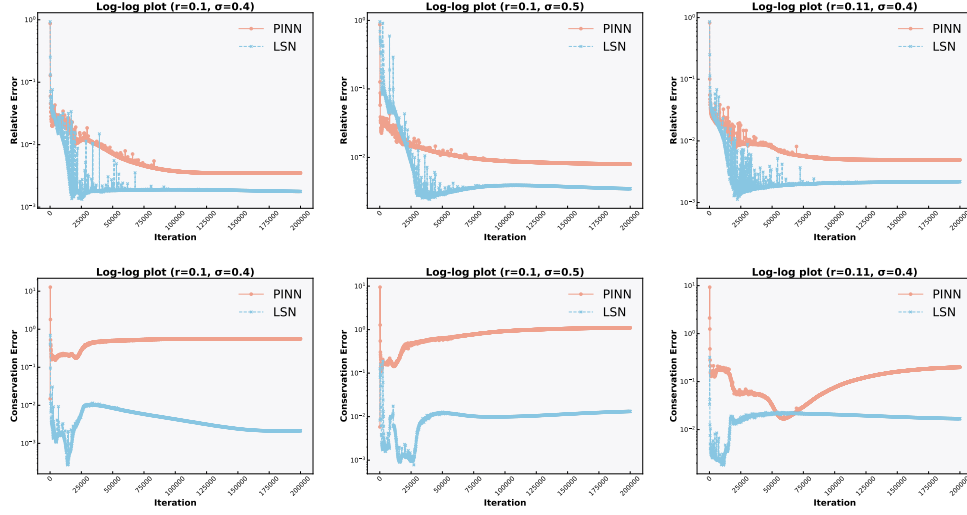


Figure 3: Log-log relative test error curves of PINNs and LSN under the third parameters configuration.

Table 2: Comparisons of relative test error of LSN and PINNs after 80,000 training iterations. Here Γ represents the rate of learning rate decay, while “Factor” represents the ratio of the test error of PINNs to that of LSN.

RFR (r)	Volatility (σ)	Relative test error		Factor
		PINNs	LSN	
0.1($\Gamma = 0.99$)	0.05	3.1×10^{-3}	4.5×10^{-4}	6.9
0.1($\Gamma = 0.95$)	0.05	1.1×10^{-3}	5.4×10^{-4}	2.0
0.1($\Gamma = 0.95$)	0.2	5.5×10^{-3}	1.6×10^{-3}	3.4
0.1($\Gamma = 0.95$)	0.4	3.5×10^{-3}	1.3×10^{-3}	2.6
0.1($\Gamma = 0.95$)	0.5	8.0×10^{-3}	2.4×10^{-3}	3.3
0.11($\Gamma = 0.95$)	0.4	5.0×10^{-3}	1.1×10^{-3}	4.4

We visualize the numerical solutions obtained on the test set using these two sets of hyperparameters in Figure 2. In identical experimental configurations, LSN outperforms PINNs, achieving a point-wise error magnitude of 10^{-2} in contrast to 10^{-1} observed with PINNs.

The error curves for LSN and PINNs with respect to the number of training steps for the third set of parameters are presented in Figure 3. It can be observed from Figure 3 that the conservation error of PINNs is of the order 10^{-1} , whereas LSN can achieve an error on the magnitude 10^{-4} . Furthermore, the relative error of LSN also consistently remains lower than that of PINNs.

In the fourth set of experiments, we increase the number of collocation data points to 10k. It can be observed from Figure 4 that increasing the number of collocation data points improves the accuracy of both PINNs and LSN. Notably, the parameters $r = 0.11$, $\sigma = 0.4$, the test error magnitude of PINNs and reaches 10^{-3} and 10^{-3} , respectively.

To provide a more intuitive demonstration of the superiority of LSN, we consider the test accuracy of the method under different equation parameters, as shown in Table 2. Compared with vanilla PINNs, LSN can reduce the relative test error by up to **7** times, with an average improvement of **2-4** times.

5.2 Comparison with State-of-the-art Methods

We conduct comparative experiments between LSN and several state-of-the-art methods including IPINNs (Bai et al., 2022b), sfPINNs (Wong et al., 2022), fPINNs (Wong et al., 2022) and LPS (Akbound-Sadegh et al., 2024), under different equation parameter setups (i.e., different risk-free rate and volatility), following Ankudinova & Ehrhardt (2008); Shinde & Takale (2012); Bai et al. (2022b).

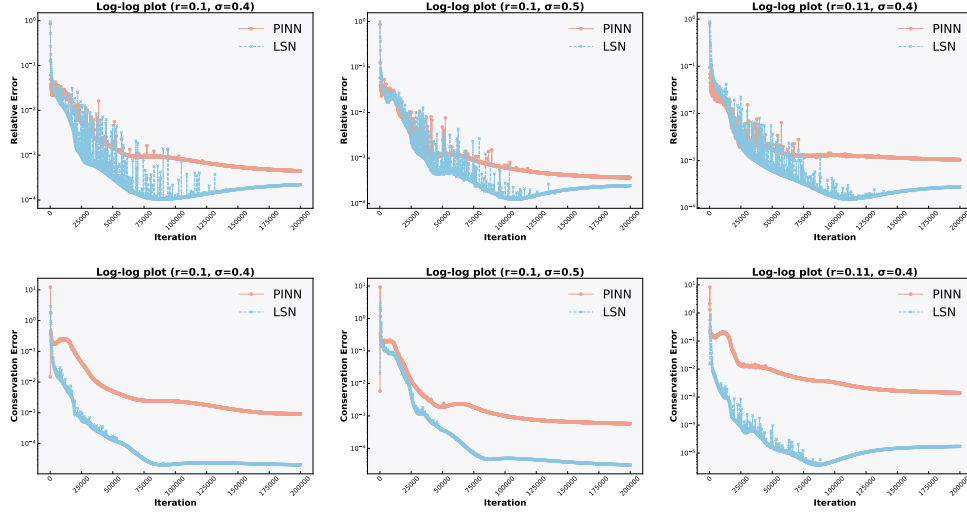


Figure 4: Log-log relative test error curves of PINNs and LSN under the forth parameters configuration.

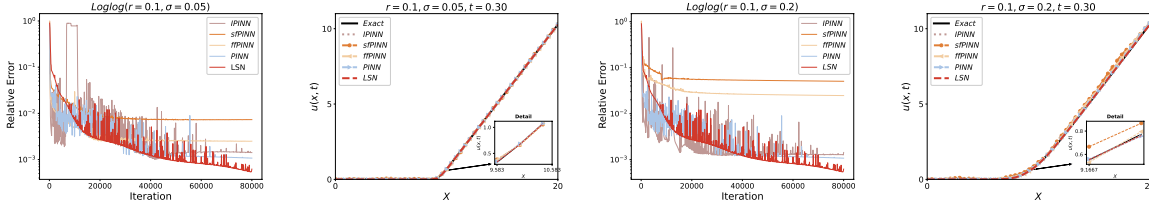


Figure 5: Log-log relative test error curves and function approximation results of LSN, PINNs, and PINNs variants. The error curves are shown in the first and third rows, while the function approximation results at $t = 0.30$ are presented in the second and fourth rows.

Experimental Design. All methods share the following hyperparameter setup, i.e., learning rate $lr = 0.001$ and learning rate decay rate $\Gamma = 0.95$. The training steps are set as 80,000 and 200,000, depending on the speed of convergence.

Figure 5 provides Log-log relative test error curves and function approximation results of LSN, PINNs, and PINNs variants. The results demonstrate that the relative error of LSN consistently remains below those of vanilla PINNs and their variants across different experimental settings. Both sPINNs and fPINNs exhibit unsatisfactory performance under certain parameters, occasionally performing even worse than vanilla PINNs. This underperformance may be attributed to the fact that sPINNs and fPINNs are more suited to scenarios with sinusoidal-form solutions, thereby failing to effectively approximate the complex solution of the Black-Scholes equation (Wong et al., 2022). We conduct comparative experiments among LSN, LPS, and PINNs using the same weights, as shown in Figure 6. Specifically, LSN and LPS share the same weights λ_i for $i = 1, \dots, 4$, while PINNs share the same weights λ_i for $i = 1, \dots, 3$ as LSN and LPS but with $\lambda_4 = 0$. The experiments demonstrate that LSN outperforms both PINNs and LPS. Additionally, LPS exhibits overall superior performance compared to PINNs when early stopping is employed.

For a more fine-grained comparison between LPS and LSN, we further finetune the weights l_i ($i = 1, \dots, 4$) of the loss function of LPS under different configurations. Notably, l_i ($i = 1, \dots, 3$) in LPS serve the same purpose as λ_i ($i = 1, \dots, 3$) in LSN, while l_4 in LPS determines the weight of the symmetry residuals, and λ_4 in LSN determines the weight of the residuals of the conservation laws corresponding to the Lie symmetry operators. To illustrate the specific process of weight tuning for LPS, consider the example with $r = 0.1$ and $\sigma = 0.4$, as shown in Figure 7. We start by fixing all weights to 1 and then traverse l_1 values from $[10, 1, 0.1, 0.01, 0.001, 0.0001]$ in descending order, selecting the best value of $l_1 = 1$. Similarly, we traverse l_2 values and find that l_2 performs well in the range of 0.1 to 10. We then further subdivide this range into $[10, 4, 2, 1, 0.5, 0.25, 0.1]$ for experimentation and select the best value for l_2 , which is fixed thereafter. This process is repeated for finetuning other parameters of LPS.

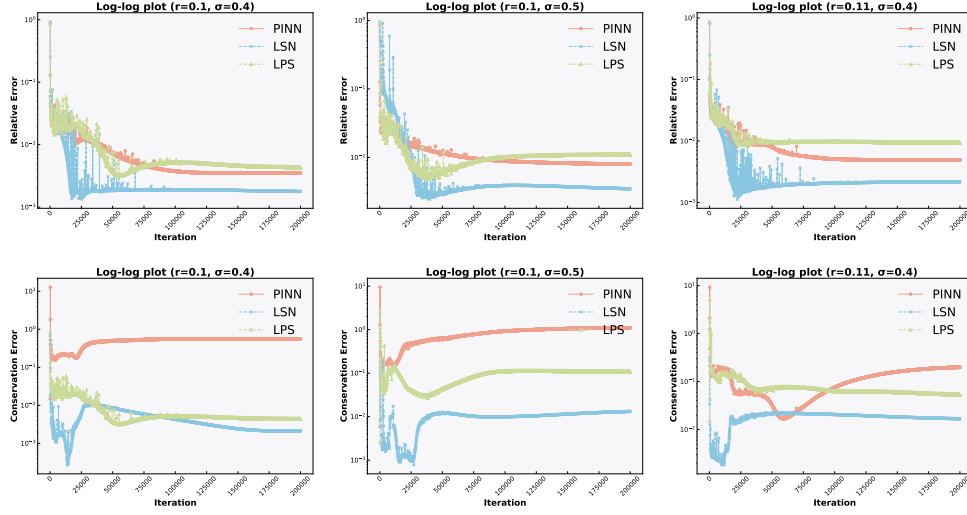


Figure 6: Log-log relative test error curves of PINNs, LSN and LPS under the third parameters configuration.

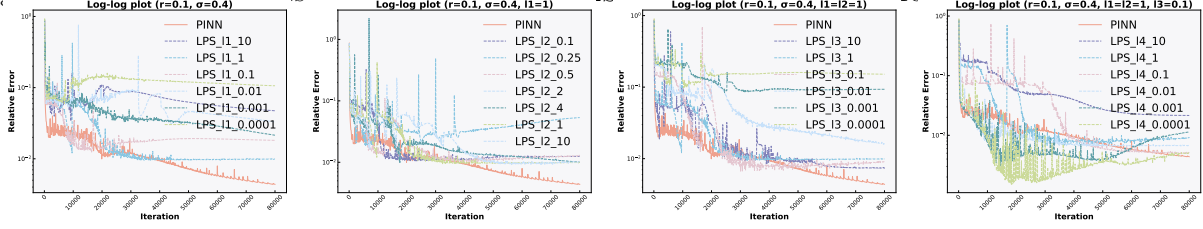


Figure 7: Log-log relative test error curves of PINNs and LPS.

After finetuning the weights of the loss function of LPS, and using the previously set weights for LSN and PINNs, we validate the performance of LSN, PINNs, and the finetuned LPS model. As shown in Figure 8, after extensive weight tuning, LPS outperforms PINNs with early stopping in relative test error but remains surpassed by LSN in terms of relative test error and conservation law error.

6 Conclusion

This paper proposes Lie Symmetry Net (LSN) to solve differential equations for modeling financial market dynamics by exploiting the intrinsic symmetry of collocation data. The Lie symmetries of these equations is interpreted as several conservation laws. We define a Lie symmetries residual to measure how well these conservation laws are realised at specific points in the collocation data space, which is then integrated over the entire collocation data space to form a Lie symmetry risk. LSN is optimized under structural risk minimization framework to balance the Lie symmetry risk and the original collocation data fitting residuals. Extensive experiments demonstrate the effectiveness and scalability of LSN, showing that the test error is reduced by more than an order of magnitude.

Broader Impact Statement and Future Work

This paper aims to develop AI-driven, symmetry-aware differential equation simulators to model financial market dynamics, which may also contribute to scientific discovery and engineering. This paper also pioneers the realization of Lie symmetries by maintaining the corresponding conservation laws, presenting a universal, off-the-shelf solution that is not limited to PINNs or the Black-Scholes equation, but can be extended to a wide range of backbones and differential equations. For future work, we will consider the incorporation of symmetries into network architecture.

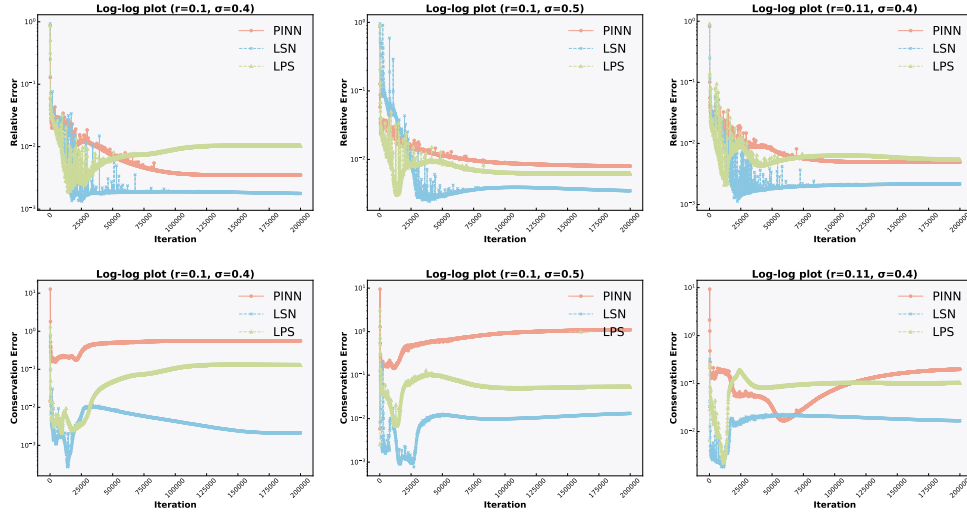


Figure 8: Log-log Error Curves Over Training Steps: PINNs vs. LSN vs. LPS. After individually tuning the weights for LPS, the performance of LSN is evaluated on the testing collocation data set using two metrics.

References

- Tara Akhound-Sadegh, Laurence Perreault-Levasseur, Johannes Brandstetter, Max Welling, and Siamak Ravanbakhsh. Lie point symmetry and physics-informed networks. *Advances in Neural Information Processing Systems*, 36, 2024.
- Julia Ankudinova and Matthias Ehrhardt. On the numerical solution of nonlinear black-scholes equations. *Computers & Mathematics with Applications*, 56(3):799–812, 2008.
- Vijay Badrinarayanan, Bamdev Mishra, and Roberto Cipolla. Symmetry-invariant optimization in deep networks. *arXiv preprint arXiv:1511.01754*, 2015.
- Yuexing Bai, Temuer Chaolu, and Sudao Bilige. The application of improved physics-informed neural network (ipinn) method in finance. *Nonlinear Dynamics*, 107(4):3655–3667, Mar 2022a. doi: 10.1007/s11071-021-07146-z. URL <http://dx.doi.org/10.1007/s11071-021-07146-z>.
- Yuexing Bai, Temuer Chaolu, and Sudao Bilige. The application of improved physics-informed neural network (ipinn) method in finance. *Nonlinear Dynamics*, 107(4):3655–3667, 2022b.
- Fischer Black and Myron Scholes. The pricing of options and corporate liabilities. *Journal of Political Economy*, pp. 637–654, May 1973. doi: 10.1086/260062. URL <http://dx.doi.org/10.1086/260062>.
- Alexander Bogatskiy, Timothy Hoffman, David W Miller, Jan T Offermann, and Xiaoyang Liu. Explainable equivariant neural networks for particle physics: Pelican. *Journal of High Energy Physics*, 2024(3):1–66, 2024.
- Elena Celledoni, Matthias J Ehrhardt, Christian Etmann, Brynjulf Owren, Carola-Bibiane Schönlieb, and Ferdia Sherry. Equivariant neural networks for inverse problems. *Inverse Problems*, 37(8):085006, 2021.
- JA González Cervera. Solution of the black-scholes equation using artificial neural networks. In *Journal of Physics: Conference Series*, volume 1221, pp. 012044. IOP Publishing, 2019.
- Taco Cohen et al. *Equivariant convolutional networks*. PhD thesis, Taco Cohen, 2021.
- Tim De Ryck and Siddhartha Mishra. Error analysis for physics-informed neural networks (pinns) approximating kolmogorov pdes. *Advances in Computational Mathematics*, 48(6):79, 2022.
- Pierre Del Moral and Pierre Del Moral. *Feynman-kac formulae*. Springer, 2004.

- Simon S Du, Wei Hu, and Jason D Lee. Algorithmic regularization in learning deep homogeneous models: Layers are automatically balanced. In S. Bengio, H. Wallach, H. Larochelle, K. Grauman, N. Cesa-Bianchi, and R. Garnett (eds.), *Advances in Neural Information Processing Systems*, volume 31, 2018.
- RM Edelstein and KS Govinder. Conservation laws for the black–scholes equation. *Nonlinear Analysis: Real World Applications*, 10(6):3372–3380, 2009.
- Giuseppe Gaeta. Symmetry of stochastic non-variational differential equations. *Physics Reports*, 686:1–62, 2017.
- Rafail K Gazizov and Nail H Ibragimov. Lie symmetry analysis of differential equations in finance. *Nonlinear Dynamics*, 17:387–407, 1998.
- Jan E Gerken, Jimmy Aronsson, Oscar Carlsson, Hampus Linander, Fredrik Ohlsson, Christoffer Petersson, and Daniel Persson. Geometric deep learning and equivariant neural networks. *Artificial Intelligence Review*, 56(12):14605–14662, 2023.
- Victor Goodman and Joseph Stampfli. The mathematics of finance. *American Mathematical Society*, 2001.
- Zhongkai Hao, Zhengyi Wang, Hang Su, Chengyang Ying, Yinpeng Dong, Songming Liu, Ze Cheng, Jian Song, and Jun Zhu. Gnot: A general neural operator transformer for operator learning. In *International Conference on Machine Learning*, pp. 12556–12569. PMLR, 2023.
- Uwe Hassler. Ito’s lemma. *Stochastic Processes and Calculus: An Elementary Introduction with Applications*, pp. 239–258, 2016.
- Lingshen He, Yuxuan Chen, Yiming Dong, Yisen Wang, Zhouchen Lin, et al. Efficient equivariant network. *Advances in Neural Information Processing Systems*, 34:5290–5302, 2021.
- Robert Hecht-Nielsen. On the algebraic structure of feedforward network weight spaces. In Rolf ECKMILLER (ed.), *Advanced Neural Computers*, pp. 129–135. 1990.
- Jian Huang and Zhongdi Cen. Cubic spline method for a generalized black-scholes equation. *Mathematical Problems in Engineering*, 2014:1–7, Jan 2014. doi: 10.1155/2014/484362. URL <http://dx.doi.org/10.1155/2014/484362>.
- Nail H Ibragimov. *CRC handbook of Lie group analysis of differential equations*, volume 3. CRC press, 1995.
- Svante Janson and Johan Tysk. Feynman–kac formulas for black–scholes–type operators. *Bulletin of the London Mathematical Society*, 38(2):269–282, 2006.
- Mohan K. Kadalbajoo, Lok Pati Tripathi, and Alpesh Kumar. A cubic b-spline collocation method for a numerical solution of the generalized black–scholes equation. *Mathematical and Computer Modelling*, 55(3–4):1483–1505, Feb 2012. doi: 10.1016/j.mcm.2011.10.040. URL <http://dx.doi.org/10.1016/j.mcm.2011.10.040>.
- A. H. Kara and F. M. Mahomed. Relationship between symmetries and conservation laws. *International Journal of Theoretical Physics*, 39(1):23–40, Jan 2000. doi: 10.1023/a:1003686831523. URL <http://dx.doi.org/10.1023/a:1003686831523>.
- Abdul H Kara and Fazal M Mahomed. A basis of conservation laws for partial differential equations. *Journal of Nonlinear Mathematical Physics*, 9(sup2):60–72, 2002.
- Chaudry Masood Khaliq and Tanki Motsepa. Lie symmetries, group-invariant solutions and conservation laws of the vasicek pricing equation of mathematical finance. *Physica A: Statistical Mechanics and its Applications*, 505:871–879, 2018.
- Fima C Klebaner. *Introduction to Stochastic Calculus with Applications*. Mar 2012. doi: 10.1142/p821. URL <http://dx.doi.org/10.1142/p821>.

- Anthony W Knapp and Anthony William Knapp. *Lie groups beyond an introduction*, volume 140. Springer, 1996.
- MB Koc, I Boztosun, and D Boztosun. On the numerical solution of black-scholes equation. In *International Workshop on MeshFree Methods*, pp. 1, 2003.
- Nikola Kovachki, Zongyi Li, Burigede Liu, Kamyar Azizzadenesheli, Kaushik Bhattacharya, Andrew Stuart, and Anima Anandkumar. Neural operator: Learning maps between function spaces with applications to pdes. *Journal of Machine Learning Research*, 24(89):1–97, 2023.
- Roman Kozlov. Symmetries of systems of stochastic differential equations with diffusion matrices of full rank. *Journal of Physics A: Mathematical and Theoretical*, 43(24):245201, 2010.
- Zhe Li, Zixiang Lu, Ruichen Li, Xuelan Wen, Xiang Li, Liwei Wang, Ji Chen, and Weiluo Ren. Symmetry enforced solution of the many-body schrödinger equation with deep neural network. *arXiv preprint arXiv:2406.01222*, 2024.
- Zongyi Li, Nikola Kovachki, Kamyar Azizzadenesheli, Burigede Liu, Kaushik Bhattacharya, Andrew Stuart, and Anima Anandkumar. Fourier neural operator for parametric partial differential equations. *arXiv preprint arXiv:2010.08895*, 2020.
- Hanze Liu, Jibin Li, and Quanxin Zhang. Lie symmetry analysis and exact explicit solutions for general burgers’ equation. *Journal of Computational and Applied Mathematics*, 228(1):1–9, 2009.
- Lu Lu, Pengzhan Jin, Guofei Pang, Zhongqiang Zhang, and George Em Karniadakis. Learning nonlinear operators via deepnet based on the universal approximation theorem of operators. *Nature machine intelligence*, 3(3):218–229, 2021.
- Goran Marjanovic and Victor Solo. Numerical methods for stochastic differential equations in matrix lie groups made simple. *IEEE Transactions on Automatic Control*, 63(12):4035–4050, 2018.
- Goran Marjanovic, Marc J Piggott, and Victor Solo. A simple approach to numerical methods for stochastic differential equations in lie groups. In *2015 54th IEEE Conference on Decision and Control (CDC)*, pp. 7143–7150. IEEE, 2015.
- Robert C Merton. Theory of rational option pricing. *The Bell Journal of economics and management science*, pp. 141–183, 1973.
- Tetsuya Misawa. A lie algebraic approach to numerical integration of stochastic differential equations. *SIAM Journal on Scientific Computing*, 23(3):866–890, 2001.
- Bernt Øksendal and Bernt Øksendal. *Stochastic differential equations*. Springer, 2003.
- Francesco Oliveri. Lie symmetries of differential equations: classical results and recent contributions. *Symmetry*, 2(2):658–706, 2010.
- Peter J Olver. *Applications of Lie groups to differential equations*, volume 107. Springer Science & Business Media, 1993.
- Yeşim Sağlam Özkan, Emrullah Yaşar, and Aly R Seadawy. A third-order nonlinear schrödinger equation: the exact solutions, group-invariant solutions and conservation laws. *Journal of Taibah University for Science*, 14(1):585–597, 2020.
- Andronikos Paliathanasis, K Krishnakumar, KM Tamizhmani, and Peter GL Leach. Lie symmetry analysis of the black-scholes-merton model for european options with stochastic volatility. *Mathematics*, 4(2):28, 2016.
- Nicolas Privault. *Short Rates and Bond Pricing*, pp. 479–512. Nov 2022. doi: 10.1201/9781003298670-17. URL <http://dx.doi.org/10.1201/9781003298670-17>.

- Maziar Raissi, Paris Perdikaris, and George E Karniadakis. Physics-informed neural networks: A deep learning framework for solving forward and inverse problems involving nonlinear partial differential equations. *Journal of Computational physics*, 378:686–707, 2019.
- S Chandra Sekhara Rao et al. High-order numerical method for generalized black-scholes model. *Procedia Computer Science*, 80:1765–1776, 2016.
- Marianito R. Rodrigo and Rogemar S. Mamon. An alternative approach to solving the black-scholes equation with time-varying parameters. *Applied Mathematics Letters*, 19(4):398–402, Apr 2006. doi: 10.1016/j.aml.2005.06.012. URL <http://dx.doi.org/10.1016/j.aml.2005.06.012>.
- Renan A Rojas-Gomez, Teck-Yian Lim, Minh N Do, and Raymond A Yeh. Making vision transformers truly shift-equivariant. In *Proceedings of the IEEE/CVF Conference on Computer Vision and Pattern Recognition*, pp. 5568–5577, 2024.
- Joseph J Rotman. *An introduction to the theory of groups*, volume 148. Springer Science & Business Media, 2012.
- Victor Garcia Satorras, Emiel Hoogetboom, and Max Welling. E (n) equivariant graph neural networks. In *International conference on machine learning*, pp. 9323–9332. PMLR, 2021.
- John Shawe-Taylor, Peter L Bartlett, Robert C Williamson, and Martin Anthony. Structural risk minimization over data-dependent hierarchies. *IEEE transactions on Information Theory*, 44(5):1926–1940, 1998.
- AS Shinde and KC Takale. Study of black-scholes model and its applications. *Procedia Engineering*, 38: 270–279, 2012.
- Héctor J. Sussmann. Uniqueness of the weights for minimal feedforward nets with a given input-output map. *Neural Networks*, 5(4):589–593, 1992.
- Radoslav Valkov. Fitted finite volume method for a generalized black-scholes equation transformed on finite interval. *Numerical Algorithms*, 65(1):195–220, Jan 2014. doi: 10.1007/s11075-013-9701-3. URL <http://dx.doi.org/10.1007/s11075-013-9701-3>.
- Jian Cheng Wong, Chinchun Ooi, Abhishek Gupta, and Yew-Soon Ong. Learning in sinusoidal spaces with physics-informed neural networks. *IEEE Transactions on Artificial Intelligence*, 2022.
- Yuchen Xie, Yu Ma, and Yahui Wang. Automatic boundary fitting framework of boundary dependent physics-informed neural network solving partial differential equation with complex boundary conditions. *Computer Methods in Applied Mechanics and Engineering*, 414:116139, 2023.
- Luxuan Yang, Ting Gao, Yubin Lu, Jinqiao Duan, and Tao Liu. Neural network stochastic differential equation models with applications to financial data forecasting. *Applied Mathematical Modelling*, 115: 279–299, 2023.
- Bo Zhao, Iordan Ganev, Robin Walters, Rose Yu, and Nima Dehmamy. Symmetries, flat minima, and the conserved quantities of gradient flow. In *The Eleventh International Conference on Learning Representations*, 2023.
- Liu Ziyin. Symmetry induces structure and constraint of learning. In *Proceedings of the 41st International Conference on Machine Learning*, volume 235, pp. 62847–62866, 2024.
- Liu Ziyin, Mingze Wang, Hongchao Li, and Lei Wu. Parameter symmetry and noise equilibrium of stochastic gradient descent. In *The Thirty-eighth Annual Conference on Neural Information Processing Systems*, 2024.

A Appendix

The Appendix is divided into three parts: 1) Section A.1 provides the necessary definitions and lemmas, 2) Section A.2 includes the general form of the PDE, 3) Section A.3 provides the knowledge about the Lie symmetries of Vařiřek, 4) Section A.4 provides the some experiments with different Lie symmetry operator combinations, and 5) Section A.5 presents the theoretical analysis of LSN, including its approximation and generalization properties.

A.1 Definitions and Technical Lemmas

In this section, we will present the definitions and lemmas required for our subsequent discussions.

Definition A.1 (Wiener process). The Wiener process (also known as Brownian motion) is a continuous-time stochastic process commonly used to model random walks. The standard definition of a Wiener process includes several key features:

1. Starting Point: The process starts at $W_0 = 0$, indicating that its initial position is zero.
2. Independent Increments: For all $0 \leq s < t$, the increments $W_t - W_s$ are mutually independent. This implies that the process is memory-less, and its future behavior is not influenced by its past.
3. Stationary Increments: For all $0 \leq s < t$, the distribution of the increment $W_t - W_s$ depends only on the time difference $t - s$, and is independent of the specific values of s and t . Mathematically, this is expressed as $W_t - W_s \sim \mathcal{N}(0, t - s)$, where $\mathcal{N}(0, t - s)$ denotes a normal distribution with mean 0 and variance $t - s$.
4. Continuous Paths: The paths of the Wiener process are almost surely continuous. This means that the function $t \mapsto W_t$ is continuous with probability 1.

Definition A.2 (European call options). European call options are financial derivatives granting the holder the right, without obligation, to purchase the underlying asset at a predetermined price upon expiration.

Definition A.3 (Lie symmetries (Gazizov & Ibragimov, 1998)). Consider second-order evolutionary PDEs:

$$u_t - F(t, x, u, u_{(1)}, u_{(2)}) = 0, \quad (15)$$

where u is a function of independent variables t and $x = (x^1, \dots, x^n)$, and $u_{(1)}$, $u_{(2)}$ represent the sets of its first and second-order partial derivatives: $u_{(1)} = (u_{x^1}, \dots, u_{x^n})$, $u_{(2)} = (u_{x^1 x^1}, u_{x^1 x^2}, \dots, u_{x^n x^n})$. Transformations of the variables t, x, u are given by:

$$\bar{t} = f(t, x, u, a), \quad \bar{x}^i = g^i(t, x, u, a), \quad \bar{u} = h(t, x, u, a), \quad i = 1, \dots, n, \quad (16)$$

where these transformations depend on a continuous parameter a . These are defined as symmetry transformations of Equation (15) if the equation retains its form in the new variables $\bar{t}, \bar{x}, \bar{u}$. The collection G of all such transformations forms a continuous group, meaning G includes the identity transformation:

$$\bar{t} = t, \quad \bar{x}^i = x^i, \quad \bar{u} = u,$$

the inverse of any transformation in G , and the composition of any two transformations in G . This symmetry group G is also known as the group admitted by Equation (15). According to the Lie group theory, constructing the symmetry group G is equivalent to determining its infinitesimal transformations:

$$\bar{t} \approx t + a\xi^0(t, x, u), \quad \bar{x}^i \approx x^i + a\xi^i(t, x, u), \quad \bar{u} \approx u + a\eta(t, x, u). \quad (17)$$

For convenience, the infinitesimal transformation Equation (17) can be represented by the operator:

$$X = \xi^0(t, x, u) \frac{\partial}{\partial t} + \xi^i(t, x, u) \frac{\partial}{\partial x^i} + \eta(t, x, u) \frac{\partial}{\partial u}.$$

Definition A.4 (Relative test error). The relative test error between an approximate solution $\hat{u}(\mathcal{S})$ and an exact solution $u^*(\mathcal{S})$ on test collocation data \mathcal{S} is defined as follows:

$$\text{Relative test error} = \left\| \frac{\hat{u}(\mathcal{S}) - u^*(\mathcal{S})}{u^*(\mathcal{S})} \right\|.$$

Definition A.5. [Feynman-Kac formula](Del Moral & Del Moral, 2004) The Feynman-Kac formula provides a critical theoretical framework to establish a connection between certain types of PDEs and SDEs. Given a payoff function $f(x, t)$ and defined a discounting function $r(x, t)$ to calculate the present value of future payoffs, if $u(x, t)$ is a solution to the PDE:

$$\frac{\partial u}{\partial t} + \mu(x, t) \frac{\partial u}{\partial x} + \frac{1}{2} \sigma^2(x, t) \frac{\partial^2 u}{\partial x^2} - r(x, t) u = 0, \quad (18)$$

with the terminal condition $u(x, T) = f(x)$, then the solution $u(x, T)$ to this PDE can be represented as:

$$E \left[e^{-\int_t^T r(X_s, s) ds} f(X_T) \mid X_t = x \right], \quad (19)$$

where X_T denotes the value of Equation (2) at time T .

Lemma A.6 (Itô's lemma (Hassler, 2016)). *The general form of Itô's Lemma for a function $f(t, X_t)$ of time t and a stochastic process X_t satisfying a stochastic differential equation is given by*

$$df(t, X_t) = \left(\frac{\partial f}{\partial t} + \mu \frac{\partial f}{\partial x} + \frac{1}{2} \sigma^2 \frac{\partial^2 f}{\partial x^2} \right) dt + \sigma \frac{\partial f}{\partial x} dW_t.$$

Here t represents time, X_t is a stochastic process satisfying a stochastic differential equation $dX_t = \mu dt + \sigma dW_t$, $f(t, X_t)$ is the function of interest. $\frac{\partial f}{\partial t}$, $\frac{\partial f}{\partial x}$, and $\frac{\partial^2 f}{\partial x^2}$ denote the partial derivatives of f with respect to time and the state variable x , μ is the drift coefficient in the SDE, σ is the diffusion coefficient in the SDE and dW_t is the differential of a Wiener process.

Lemma A.7 (Dynkin's formula (Klebaner, 2012)). *For every $x \in \Omega$, let X^x be the solution to a linear PDE Equation (1) with affine $\mu : \mathbb{R}^d \rightarrow \mathbb{R}^d$ and $\sigma : \mathbb{R}^d \rightarrow \mathbb{R}^{d \times d}$. If $\varphi \in C^2(\mathbb{R}^d)$ with bounded first partial derivatives, then it holds that $(\partial_t u)(x, t) = \mathcal{L}[u](x, t)$ where u is defined as*

$$u(x, t) = \varphi(x) + \mathbb{E} \left[\int_0^t (\mathcal{F}\varphi)(X_\tau^x) d\tau \right], \quad \text{for } x \in \Omega, \quad t \in [0, T], \quad (20)$$

where

$$\begin{aligned} dX_t^x &= \mu(X_t^x) dt + \sigma(X_t^x) dW_t, \quad X_0^x = x, \\ (\mathcal{F}\varphi)(X_t^x) &= \sum_{i=1}^d \mu_i(X_t^x) (\partial_i \varphi)(X_t^x) + \frac{1}{2} \sum_{i,j,k=1}^d \sigma_{i,k}(X_t^x) \sigma_{k,j}(X_t^x) (\partial_{ij}^2 \varphi)(X_t^x), \end{aligned} \quad (21)$$

where W_t is a standard d -dimensional Brownian motion on probability space $(\Omega, \mathcal{F}, P, (\mathbb{F}_t)_{t \in [0, T]})$, and \mathcal{F} is the generator of X_t^x .

Lemma A.8 ((De Ryck & Mishra, 2022)). *Let $d, L, W \in \mathbb{N}, R \geq 1, L, W \geq 2$, let μ be a probability measure on $\Omega = [0, 1]^d$, let $f : \Omega \rightarrow [-R(W+1), R(W+1)]$ be a function and let $f_\theta : \Omega \rightarrow \mathbb{R}, \theta \in \Theta$, be tanh neural networks with at most $L-1$ hidden layers, width at most W and weights and biases bounded by R . For every $0 < \epsilon < 1$, it holds for the generalisation and training error Equation (13) that,*

$$\mathbb{P}(\mathcal{E}_G(\theta^*(\mathcal{S})) \leq \epsilon + \mathcal{E}_T(\theta^*(\mathcal{S}), \mathcal{S})) \geq 1 - \eta \quad \text{if} \quad N \geq \frac{64d(L+3)^2 W^6 R^4}{\epsilon^4} \ln \left(\frac{4\sqrt{d+4RW}}{\epsilon} \right).$$

A.2 General PDEs

In this section, we will demonstrate the transformation of the BS equation and the Vařiček equation into a general form, i.e., Equation (1).

Black-Scholes equation. As detailed in the main text, the specific expression of the Black-Scholes Equation (4) is

$$\begin{cases} \frac{\partial u_t}{\partial t_t} + \frac{1}{2}\sigma^2 x_t^2 \frac{\partial^2 u_t}{\partial x_t^2} + r x_t \frac{\partial u_t}{\partial x_t} - r u_t = 0, & (x_t, t_t) \in \Omega \times [0, T], \\ u_t(T, x_t) = \max(x_t - K, 0), & x_t \in \Omega, \\ u_t(t_t, 0) = 0, & t_t \in [0, T]. \end{cases} \quad (22)$$

Let's $t = T - t_t \in [T, 0]$, $x = x_t \in \Omega$. Then the BS Equation (22) can be transformed into a more generalised initial-boundary value problem (Cervera, 2019),

$$\begin{cases} -\frac{\partial u}{\partial t} + \frac{1}{2}\sigma^2 x^2 \frac{\partial^2 u}{\partial x^2} + r x \frac{\partial u}{\partial x} - r u = 0, & (x, t) \in \Omega \times [0, T], \\ u(0, x) = \max(x - K, 0), & x \in \Omega \\ V(t, 0) = 0, & t \in [T, 0]. \end{cases} \quad (23)$$

Here $\mathbf{L}[u]$ in Equation (1) for Equation (23) is $\mathbf{L}[u] = \frac{1}{2}\sigma^2 x^2 \frac{\partial^2 u(x,t)}{\partial x^2} + r x \frac{\partial u(x,t)}{\partial x} - r u(x,t)$ with $\sigma(x) = \sigma x$, $\mu(x) = r x$, $v(x) = -r$ and $\varphi(x) = \max(x - K, 0)$.

Vařiček Equation (Privault, 2022). In a financial market characterised by short-term lending transactions between financial institutions, the evolution of short-term interest rates can be modeled by the following SDE:

$$dx_t = \lambda(\beta - x_t)dt + \sigma dW_t,$$

where $\lambda, \beta > 0$, σ are constants and W_t is the Wiener process. Using the Feynman-Kac formula we can obtain the Vařiček pricing equation which is used to price risk-free bonds $u(x, t)$:

$$\begin{cases} \frac{\partial u}{\partial t} + \alpha \frac{\partial u}{\partial x} + \lambda(\beta - x) \frac{\partial u}{\partial x} + \gamma x u = 0 & \Omega \times [0, T], \\ u(x, T) = 1 & \Omega \times T, \\ u(x, t) = \psi(x, t) & \partial\Omega \times [0, T]. \end{cases} \quad (24)$$

where $\alpha = \frac{1}{2}\sigma^2$, $\gamma = -1$ and $\psi(x, t)$ is the boundary conditions. The zero-coupon bond price in the Vařiček pricing model is given by (Khalique & Motsepa, 2018):

$$u(x, t) = e^{A(T-t) + xC(T-t)}, \quad (25)$$

where $C(t) = -\frac{1}{\lambda}(1 - e^{-\lambda t})$ and $A(t) = \frac{4\lambda^2\beta - 3\sigma^2}{4\lambda^3} + \frac{\sigma^2 - 2\lambda^2\beta}{2\lambda^2}t + \frac{\sigma^2 - \lambda^2\beta}{\lambda^3}e^{-\lambda t} - \frac{\sigma^2}{4\lambda^3}e^{-2\lambda t}$.

Similarly, we can express the Vařiček equation in a general form as follows:

$$\begin{cases} u_t(x, t) = \mathcal{L}[u], & \text{for all } (x, t) \in \Omega \times [0, T], \\ u(0, x) = \varphi(x), & \text{for all } x \in \Omega, \\ u(y, t) = \psi(y, t), & \text{for all } (y, t) \in \partial\Omega \times [0, T], \end{cases} \quad (26)$$

where $\mathbf{L}[u]$ in Equation (1) for Equation (24) is $\mathbf{L}[u] = \alpha u_{xx} + \lambda(\beta - x)u_x + \gamma x u$ with $\sigma(x) = \sqrt{2\alpha}$, $\mu(x) = \lambda(\beta - x)$, $v(x) = \gamma x$ and $\varphi(x) = 1$.

A.3 Lie Symmetries of Vařiček Equation

Lie Symmetry Operator. Lie symmetry operator is a major mathematical tool for characterizing the symmetry in PDEs (see Definition A.3) (Paliathanasis et al., 2016). The Lie symmetry operators (Khalique & Motsepa, 2018) of Vařiček Equation (24) are given by the vector field

$$\begin{aligned} G_\phi &= \phi(t, x) \frac{\partial}{\partial u}, G_1 = \frac{\partial}{\partial t}, \\ G_2 &= e^{2\lambda t} \frac{\partial}{\partial t} + \frac{e^{2\lambda t}}{\lambda} (\lambda^2 x - 2\alpha\gamma - \beta\lambda^2) \frac{\partial}{\partial x} + \frac{ue^{2\lambda t}}{\alpha\lambda^2} (\alpha^2\gamma^2 + 2\alpha\beta\gamma\lambda^2 - \alpha\lambda^3 - 3\alpha\gamma\lambda^2 x + \lambda^4(\beta - x)^2) \frac{\partial}{\partial u}, \\ G_3 &= e^{-2\lambda t} \left[-\frac{\partial}{\partial t} + \frac{1}{\lambda} (\lambda^2(x - \beta) - 2\alpha\gamma) \frac{\partial}{\partial x} + \frac{\gamma u}{\lambda^2} (\lambda^2 x - \alpha\gamma) \frac{\partial}{\partial u} \right], \\ G_4 &= e^{\lambda t} \left[\frac{\partial}{\partial x} + \frac{u}{\alpha\lambda} (-\alpha\gamma - \beta\lambda^2 + \lambda^2 x) \frac{\partial}{\partial u} \right], G_5 = e^{-\lambda t} \left[\frac{\partial}{\partial x} + \frac{\gamma u}{\lambda} \frac{\partial}{\partial u} \right], G_6 = u \frac{\partial}{\partial u}. \end{aligned} \quad (27)$$

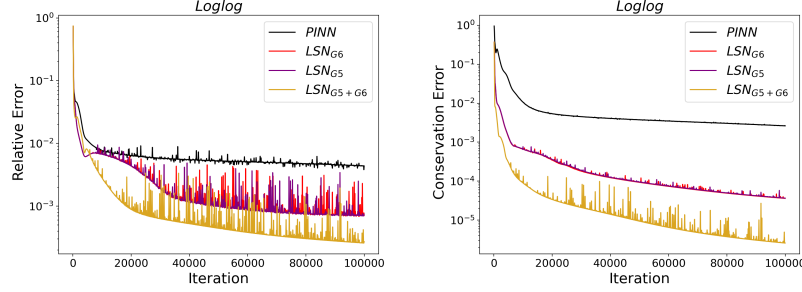


Figure 9: Log-log relative test error curves of PINNs solving the Vařiček equation. Here LSN_{G_i} , $i = 5, 6$ represents LSN with a single Lie symmetry operator, respectively, while “ $LSN_{G_5+G_6}$ ” represents LSN with the combination of two operators.

These Lie symmetry operators not only provide a deeper insight into the structure of the PDEs but also form the foundation for deriving conservation laws associated with these equations.

Conservation Law. To ascertain the Lie conservation law operators for the Vařiček Equation (24), it is necessary to analyze its adjoint equation, as follows

$$\frac{\partial \nu}{\partial t} - \alpha \frac{\partial \nu}{\partial x^2} - \lambda(x - \beta) \frac{\partial \nu}{\partial x} - (\lambda + \gamma x) \nu = 0. \quad (28)$$

where $\nu \neq 0$ is a new dependent variable $\nu = e^{pt+qx}$ with $p = \alpha q^2 - \lambda\beta q + \lambda$ and $q = -\frac{\gamma}{\lambda}$ (Here, only one example is presented for illustration purposes, although there exist numerous solutions to this set of adjoint equation). For illustrative purposes, we choose the relatively simple operator G_5 and G_6 as examples of the Vařiček Equation (27) and provide the corresponding conserved quantities (Khalique & Motsepa, 2018):

$$\begin{cases} T_5^t(u, x, t) = \frac{1}{\gamma\lambda} e^{-\lambda t} \nu \left(\lambda \frac{\partial u}{\partial x} - \gamma u \right), \\ T_5^x(u, x, t) = \frac{1}{\gamma\lambda} e^{-\lambda t} \left\{ \gamma u \left(\alpha \frac{\partial \nu}{\partial x} - \beta \lambda \nu \right) - \alpha \frac{\partial u}{\partial x} \left(\gamma \nu + \lambda \frac{\partial \nu}{\partial x} \right) - \lambda \frac{\partial u}{\partial t} \nu \right\}; \\ T_6^t(u, x, t) = u\nu, \\ T_6^x(u, x, t) = \alpha \frac{\partial u}{\partial x} \nu - u \left\{ \lambda(x - \beta) \nu + \alpha \frac{\partial \nu}{\partial x} \right\}. \end{cases}$$

In Appendix A.4, we validate the general applicability of LSN by extending it to the Vařiček model and showing the adaptability of different Lie symmetry operators.

A.4 Experiments with Different Operator Combinations

To demonstrate the general applicability of LSN, we apply LSN to solve the Vařiček equation and under a single and multiple operator combinations.

Experimental Design. In this experiment, the parameters of the Vařiček Model are set as follows: $\alpha = 0.03$, $\beta = 0.08$, $\gamma = -1$, $\sigma = 0.03$, $\Omega = 1$ and $T = 1$. The collocation data set comprises 500 internal points and 200 boundary points. The neural network architecture is designed with a depth of 2 layers and a width of 10 neurons. The training iteration is 100,000, with a learning rate of $lr = 0.001$ and a learning rate decay factor of $\Gamma = 0.95$.

As shown in Figure 9, we extend LSN to the Vařiček equation, demonstrating its general applicability to different problems. We observe that although the use of a single operator alone yields significant improvements over PINNs, the performance enhancement achieved through combined operators is even more substantial. This indicates the flexibility of our method: we can effectively employ both single operators and multiple operator combinations.

A.5 Theoretical Analysis

Given the wide range of choices for Lie symmetry operators, we use the BS equation with the selected lie operator $G_2 = x \frac{\partial}{\partial x}$ of Equation (5) as an example to theoretically demonstrate the effectiveness of our method. The corresponding conservation law Equation (6) is as follows,

$$\mathcal{R}_{Lie}[\hat{u}] := D_t T_2^t(\hat{u}) + D_x T_2^x(\hat{u}), \quad (29)$$

where

$$\begin{cases} T_2^t(\hat{u}) = -\hat{u}_x l(t) + \frac{a}{x} + \frac{2b\hat{u}}{\sigma^2 x} e^{-rt}, \\ T_2^x(\hat{u}) = \hat{u}_t l(t) + \hat{u} l'(t) + g(t) - b\hat{u} e^{-rt} + b \left(\hat{u}_x + \frac{2r\hat{u}}{\sigma^2 x} \right) x e^{-rt}. \end{cases} \quad (30)$$

Performing operator calculations with the conserved quantities (T_2^t, T_2^x) substituted into the Equation (29) yields

$$\begin{cases} D_t T_2^t(\hat{u}) = -\hat{u}_{xt} l(t) - \hat{u}_x l_t(t) + \frac{2b\hat{u}_t}{\sigma^2 x} e^{-rt} - \frac{2rb\hat{u}}{\sigma^2 x} e^{-rt}, \\ D_x T_2^x(\hat{u}) = \hat{u}_{tx} l(t) + \hat{u}_x l_t(t) - b\hat{u}_x e^{-rt} + b \left(\hat{u}_{xx} + \frac{2r\hat{u}_x}{\sigma^2 x} - \frac{2r\hat{u}}{\sigma^2 x^2} \right) x e^{-rt} + b \left(\hat{u}_x + \frac{2r\hat{u}}{\sigma^2 x} \right) e^{-rt}. \end{cases}$$

Therefore, we have

$$\begin{aligned} D_t T_2^t(\hat{u}) + D_x T_2^x(\hat{u}) &= \frac{2b\hat{u}_t}{\sigma^2 x} e^{-rt} - b\hat{u}_x e^{-rt} + b\hat{u}_{xx} e^{-rt} + \frac{2rb\hat{u}_x}{\sigma^2} e^{-rt} - \frac{2rb\hat{u}}{\sigma^2 x} e^{-rt} + b\hat{u}_x e^{-rt} \\ &= bxe^{-rt}\hat{u}_{xx} + \frac{2b}{\sigma^2 x} e^{-rt}\hat{u}_t + \frac{2rb}{\sigma^2} e^{-rt}\hat{u}_x - \frac{2rb}{\sigma^2 x} e^{-rt}\hat{u} \\ &= \frac{2be^{-rt}}{\sigma^2 x} \left(\hat{u}_t + \frac{1}{2}\sigma^2 x^2 \hat{u}_{xx} + rx\hat{u}_x - r\hat{u} \right). \end{aligned}$$

Since b is arbitrarily chosen, let's set $b = x_{min}$. Where x_{min} represents the smallest x-coordinate among the points in the configuration set. And $(x, t) \in \Omega \times [0, T]$ represents a bounded interior region, where x and t are within the specified domain Ω and time interval $[0, T]$ respectively. Therefore, there exists a positive number $M > 0$ such that

$$0 < \left| \frac{2be^{-rt}}{\sigma^2 x} \right|^2 < \left\| \frac{2be^{-rt}}{\sigma^2 x} \right\|_\infty^2 = \left\| \frac{2x_{min}e^{-rt}}{\sigma^2 x} \right\|_\infty^2 \leq \left(\frac{2x_{min}e^{-rT}}{\sigma^2 x_{min}} \right)^2 \leq \left(\frac{2e^{-rT}}{\sigma^2} \right)^2 := M. \quad (31)$$

Therefore,

$$\begin{aligned} \mathcal{L}_{Lie}[\hat{u}] &= \|\mathcal{R}_{Lie}[\hat{u}]\|^2 = \|D_t T_2^t(\hat{u}) + D_x T_2^x(\hat{u})\|^2 \\ &= \left\| \frac{2be^{-rt}}{\sigma^2 x} \left(\hat{u}_t + \frac{1}{2}\sigma^2 x^2 \hat{u}_{xx} + rx\hat{u}_x - r\hat{u} \right) \right\|^2 \\ &\leq M \left\| \hat{u}_t + \frac{1}{2}\sigma^2 x^2 \hat{u}_{xx} + rx\hat{u}_x - r\hat{u} \right\|^2 \\ &= M \|\mathcal{R}_{PDE}[\hat{u}]\|^2. \end{aligned} \quad (32)$$

A.5.1 Approximation Error Bounds of LSN

The PDE in Equation (1) is a linear parabolic equation with smooth coefficients, and conclusions about the existence of a unique classical solution u to the equation, which is sufficiently regular, can be derived using standard parabolic theory. If u is considered a classical solution, then the residual concerning u should be zero.

$$\mathcal{R}_i[u](x, t) = 0, \quad \mathcal{R}_s[u](y, t) = 0, \quad \mathcal{R}_t[u](x) = 0, \quad \mathcal{R}_{Lie}[u](x, t) = 0, \quad \forall x \in \Omega, \quad y \in \partial\Omega. \quad (33)$$

Here $\mathcal{R}_{Lie}[u](x, t) = \frac{2be^{-rt}}{\sigma^2 x} \left(u_t + \frac{1}{2}\sigma^2 x^2 u_{xx} + rxu_x - ru \right) = \frac{2be^{-rt}}{\sigma^2 x} \mathcal{R}_i[u](x, t) = 0$ (with $\frac{2be^{-rt}}{\sigma^2 x} \neq 0$.) We first list several crucial lemmas used to prove the approximation error of LSN.

Lemma A.9. *Let $T > 0$ and $\gamma, d, s \in \mathbb{N}$ with $s \geq 2 + \gamma$. Suppose $u \in W^{s,\infty}((0,1)^d \times [0,T])$ is the solution to a linear PDE equation 1. Then, for every $\varepsilon > 0$ there exists a tanh neural network $\hat{u}^\varepsilon = u_{\hat{\theta}^\varepsilon}$ with two hidden layers of width at most $\mathcal{O}(\varepsilon^{-d/(s-2-\gamma)})$ such that $\mathcal{E}(\hat{\theta}^\varepsilon) \leq \varepsilon$.*

Proof. We extend the proof of the Theorem 1 in De Ryck & Mishra (2022) to the LSN algorithm with regularization terms incorporating Lie symmetries. There exists a tanh neural network \hat{u}^ε with two hidden layers of width at most $\mathcal{O}(\varepsilon^{-d/(s-2-\gamma)})$ such that

$$\|u - \hat{u}^\varepsilon\|_{W^{2,\infty}((0,1)^d \times [0,T])} \leq \varepsilon.$$

Due to the linearity of PDEs (where Equation (1) is a linear equation with respect to u), it immediately follows that $|\mathcal{R}_i[u]|_{L^2((0,1)^d \times [0,T])} \leq \varepsilon$ and $|\mathcal{R}_{Lie}[u]|_{L^2((0,1)^d \times [0,T])} \leq M |\mathcal{R}_i[u]|_{L^2((0,1)^d \times [0,T])} \leq \varepsilon$. By employing a standard trace inequality, one can establish similar bounds for $\mathcal{R}_s[u]$ and $\mathcal{R}_t[u]$. Consequently, it directly follows that $\mathcal{E}(\hat{\theta}^\varepsilon) \leq \varepsilon$. \square

This lemma shows that the structure risk of LSN in Equation (13) can converge to zero. To address the challenge of the curse of dimensionality in structure risk of LSN Equation (13) bounds, we will leverage Dynkin's Lemma A.7, which establishes a connection between the linear partial differential Equation (1) and the Itô diffusion stochastic equation. Next, we will extend the proof for PINNs from De Ryck & Mishra (2022) to LSNs to demonstrate that the loss for LSNs can be made infinitesimally small.

Lemma A.10. *Let $\alpha, \beta, \varpi, \zeta, T > 0$, and $p > 2$. For any $d \in \mathbb{N}$, define $\Omega_d = [0,1]^d$ and consider $\varphi_d \in C^5(\mathbb{R}^d)$ with bounded first partial derivatives. Given the probability space $(\Omega_d \times [0,T], \mathcal{F}, \mu)$, and let $u_d \in C^{2,1}(\Omega_d \times [0,T])$ be a function satisfying*

$$(\partial_t u_d)(x, t) = \mathbf{L}[u_d](x, t), \quad u_d(x, 0) = \varphi_d(x), \quad \mathcal{L}_{Lie}[u_d](x, t) = 0 \quad \text{for all } (x, t) \in \Omega_d \times [0, T].$$

Assume for every $\xi, \delta, c > 0$, there exist hyperbolic tangent (tanh) neural networks such that

$$\|\varphi_d - \widehat{\varphi}_{\xi,d}\|_{C^2(D_d)} \leq \xi \quad \text{and} \quad \|\mathcal{F}\varphi - \widehat{(\mathcal{F}\varphi)}_{\delta,d}\|_{C^2([-c,c]^d)} \leq \delta. \quad (34)$$

Under these conditions, there exist constants $C, \lambda > 0$ such that for every $\varepsilon > 0$ and $d \in \mathbb{N}$, a constant $\rho_d > 0$ (independent of ε) and a tanh neural network $\Psi_{\varepsilon,d}$ with at most $C(d\rho_d)^\lambda \varepsilon^{-\max\{5p+3, 2+p+\beta\}}$ neurons and weights that grow at most as $C(d\rho_d)^\lambda \varepsilon^{-\max\{\zeta, 8p+6\}}$ for $\varepsilon \rightarrow 0$ can be found such that

$$\begin{aligned} & \|\partial_t \Psi_{\varepsilon,d} - \mathbf{L}[\Psi_{\varepsilon,d}]\|_{L^2(\Omega_d \times [0,T])} + \|\Psi_{\varepsilon,d} - u_d\|_{H^1(\Omega_d \times [0,T])} \\ & + \|\Psi_{\varepsilon,d} - u_d\|_{L^2(\partial(\Omega_d \times [0,T]))} + \|\mathcal{L}_{Lie}[\Psi_{\varepsilon,d}]\|_{L^2(\Omega_d \times [0,T])} \leq \varepsilon, \end{aligned} \quad (35)$$

where ρ_d is defined as

$$\rho_d := \max_{x \in \Omega_d} \sup_{\substack{s, t \in [0,T] \\ s < t}} \frac{\|X_s^x - X_t^x\|_{\mathcal{L}^q(P, \|\cdot\|_{\mathbb{R}^d})}}{|s - t|^{\frac{1}{p}}} < \infty. \quad (36)$$

In this context, X^x denotes the solution, following the Itô interpretation, of the stochastic differential equation (SDE) specified by Equation equation 15. Here $q > 2$ remains independent of d and the norm $\|\cdot\|_{\mathcal{L}^q(P, \|\cdot\|_{\mathbb{R}^d})}$ is defined as follows: Given a measure space $(\Omega, \mathcal{F}, \mu)$ where $q > 0$, for any $\mathcal{F}/\mathcal{B}(\mathbb{R}^d)$ -measurable function $f : \Omega \rightarrow \mathbb{R}^d$,

$$\|f\|_{\mathcal{L}^q(\mu, \|\cdot\|_{\mathbb{R}^d})} := \left[\int_{\Omega} \|f(\omega)\|_{\mathbb{R}^d}^q \mu(d\omega) \right]^{\frac{1}{q}}. \quad (37)$$

Proof. The main proof follows directly from Theorem 2 in De Ryck & Mishra (2022), where

$$\|\mathcal{L}_{Lie}[\Psi_{\varepsilon,d}]\|_{L^2(\Omega_d \times [0,T])} \leq M \|\partial_t \Psi_{\varepsilon,d} - \mathbf{L}[\Psi_{\varepsilon,d}]\|_{L^2(\Omega_d \times [0,T])} \leq \varepsilon. \quad (38)$$

\square

According to Remark 2 by De Ryck & Mishra (2022), it is indicated that the assumption conditions in the Lemma A.10 are easily satisfied after modifications for the BS equation.

Theorem A.11. *Let u be a classical solution to linear PDE as described in Equation (1) with $\mu \in C^1(\Omega; \mathbb{R}^d)$ and $\sigma \in C^2(\Omega; \mathbb{R}^{d \times d})$, let $M = \left(\frac{2e^{-rT}}{\sigma^2}\right)^2$, $v \in C^2(\Omega \times [0, T]; \mathbb{R})$, and define the residuals according Equation (11). Then,*

$$\begin{aligned} \|u - v\|_{L^2(\Omega \times [0, T])}^2 \leq & C_1 \left[\|\mathcal{R}_i[v]\|_{L^2(\Omega \times [0, T])}^2 + \|\mathcal{R}_{lie}[v]\|_{L^2(\Omega \times [0, T])}^2 + \|\mathcal{R}_t[v]\|_{L^2(\Omega)}^2 \right. \\ & \left. + C_2 \|\mathcal{R}_s[v]\|_{L^2(\partial\Omega \times [0, T])} + C_3 \|\mathcal{R}_s[v]\|_{L^2(\partial\Omega \times [0, T])}^2 \right], \end{aligned} \quad (39)$$

where

$$\begin{aligned} C_0 &= 2 \sum_{i,j=1}^d \left\| \partial_{ij}(\sigma \sigma^T)_{ij} \right\|_{L^\infty(\Omega \times [0, T])}, \\ C_1 &= T e^{(2C_0 + 2\|\operatorname{div} \mu\|_\infty + 1 + \frac{1}{M} + 2\|v\|_\infty)T}, \\ C_2 &= 2 \sum_{i=1}^d \left\| (\sigma \sigma^T \nabla_x [u - v])_i \right\|_{L^2(\partial\Omega \times [0, T])}, \\ C_3 &= 2\|\mu\|_\infty + (1 + M) \sum_{i,j,k=1}^d \left\| \partial_i(\sigma_{ik}\sigma_{jk}) \right\|_{L^\infty(\partial\Omega \times [0, T])}. \end{aligned} \quad (40)$$

Proof. Let $\hat{u} = v - u$. Integrating $\mathcal{R}_i[\hat{u}](t, x)$ over Ω and rearranging terms gives

$$\frac{d}{dt} \int_\Omega |\hat{u}|^2 dx = \frac{1}{2} \int_\Omega \operatorname{Trace}(\sigma^2 H_x[\hat{u}]) \hat{u} dx + \int_\Omega \mu J_x[\hat{u}] \hat{u} dx + \int_\Omega v |\hat{u}|^2 dx + \int_\Omega \mathcal{R}_i[\hat{u}] \hat{u} dx, \quad (41)$$

where all integrals are understood as integrals with respect to the Lebesgue measure on Ω and $\partial\Omega$, and where J_x represents the Jacobian matrix, which is the transpose of the gradient with respect to the spatial coordinates. Following the derivation by Theorem 4 of De Ryck & Mishra (2022), we can similarly show that : for the first term

$$\begin{aligned} & \int_\Omega \operatorname{Trace}(\sigma \sigma^T H_x[\hat{u}]) \hat{u} dx \\ & \leq \sum_{i=1}^d \int_{\partial\Omega} |(\sigma \sigma^T J_x(\hat{u})^T)_i \hat{u} (\hat{e}_i \cdot \hat{n})| dx - \underbrace{\int_\Omega J_x[\hat{u}] \sigma (J_x[\hat{u}] \sigma)^T dx}_{\geq 0} + \frac{c_2}{2} \int_{\partial\Omega} |\mathcal{R}_s[v]|^2 dx + \frac{c_3}{2} \int_\Omega \hat{u}^2 dx, \end{aligned} \quad (42)$$

for the second term

$$\int_\Omega \mu J_x[\hat{u}] \hat{u} dx \leq \frac{1}{2} \|\operatorname{div} \mu\|_\infty \int_\Omega \hat{u}^2 dx + \frac{1}{2} \|\mu\|_\infty \int_{\partial\Omega} |\mathcal{R}_s[v]|^2 dx, \quad (43)$$

for the fourth term

$$\int_\Omega \mathcal{R}_i[\hat{u}] \hat{u} dx \leq \frac{1}{2} \int_\Omega \mathcal{R}_i[\hat{u}]^2 dx + \frac{1}{2} \int_\Omega \hat{u}^2 dx, \quad (44)$$

where \hat{n} denotes the unit normal on $\partial\Omega$. $1 \leq i, j, k \leq d$ and

$$\begin{aligned} c_1 &= 2 \sum_{i=1}^d \left\| (\sigma \sigma^T J_x[\hat{u}]^T)_i \right\|_{L^2(\partial\Omega \times [0, T])}, \\ c_2 &= \sum_{i,j,k=1}^d \left\| \partial_i(\sigma_{ik}\sigma_{jk}) \right\|_{L^\infty(\partial\Omega \times [0, T])}, \\ c_3 &= \sum_{i,j=1}^d \left\| \partial_{ij}(\sigma \sigma^T)_{ij} \right\|_{L^\infty(\Omega \times [0, T])}. \end{aligned} \quad (45)$$

As for the third term of Equation (41), we obtain

$$\int_\Omega v |\hat{u}|^2 dx \leq \|v\|_\infty \int_\Omega |\hat{u}|^2 dx. \quad (46)$$

Integrating Equation (41) over the interval $[0, \tau] \subset [0, T]$, using all the previous inequalities together with Hölder's inequality, we find that

$$\begin{aligned} \int_{\Omega} |\hat{u}(x, \tau)|^2 dx &\leq \int_{\Omega} |\mathcal{R}_t[v]|^2 dx + c_1 \left(\int_{\partial\Omega \times [0, T]} |\mathcal{R}_s[v]|^2 dx dt \right)^{1/2} + \int_{\Omega \times [0, T]} |\mathcal{R}_i[\hat{u}]|^2 dx dt \\ &+ (c_2 + \|\mu\|_{\infty}) \int_{\partial\Omega \times [0, T]} |\mathcal{R}_s[v]|^2 dx dt + (c_3 + \|\operatorname{div} \mu\|_{\infty} + 1 + \|v\|_{\infty}) \int_{[0, \tau]} \int_{\Omega} |\hat{u}(x, s)|^2 dx dt. \end{aligned} \quad (47)$$

Referring to Equation (41), we can transform operator $\mathcal{R}_{Lie}[\hat{u}] = \frac{2be^{-rt}}{\sigma^2 x} (u_t + \frac{1}{2}\sigma^2 x^2 u_{xx} + rxu_x - ru)$ with $\frac{2be^{-rt}}{\sigma^2 x} \neq 0$, i.e., $\mathcal{R}_i[\hat{u}] = u_t + \frac{1}{2}\sigma^2 x^2 u_{xx} + rxu_x - ru = \frac{\sigma^2 x}{2be^{-rt}} \mathcal{R}_{Lie}[\hat{u}]$ into the following form,

$$\begin{aligned} \frac{d}{dt} \int_{\Omega} |\hat{u}|^2 dx &= \frac{1}{2} \int_{\Omega} \operatorname{Trace}(\sigma^2 H_x[\hat{u}]) \hat{u} dx + \int_{\Omega} \mu J_x[\hat{u}] \hat{u} dx + \int_{\Omega} v |\hat{u}|^2 dx + \int_{\Omega} \frac{\sigma^2 x}{2be^{-rt}} \mathcal{R}_{Lie}[\hat{u}] dx \\ &\leq \frac{1}{2} \int_{\Omega} \operatorname{Trace}(\sigma^2 H_x[\hat{u}]) \hat{u} dx + \int_{\Omega} \mu J_x[\hat{u}] \hat{u} dx + \int_{\Omega} v |\hat{u}|^2 dx + \frac{1}{M} \int_{\Omega} \mathcal{R}_{Lie}[\hat{u}] dx. \end{aligned} \quad (48)$$

The proof is ultimately established by using Using Grönwall's inequality and integrating over $[0, T]$. \square

Remark A.12. Theorem A.11 states that by optimizing structure risk Equation (13), the network's output can approximate the exact solution, while Lemma A.10 confirms that structure risk can be minimized. This verifies the numerical approximation of the LSN to the exact solution.

A.5.2 Generalisation Error Bounds of LSN

We set a general configuration let $\Omega \subset \mathbb{R}^d$ be compact and let $u : \Omega \rightarrow \mathbb{R}, u_{\theta} : \Omega \rightarrow \mathbb{R}$ be functions for all $\theta \in \Theta$. We consider u as the exact value of the PDE equation 1, and u_{θ} as the approximation generated by LSN with weights θ .

Let $N \in \mathbb{N}$ be the training set size and let $\mathcal{S} = \{z_1, \dots, z_M\} \in \Omega^N$ be the training set, where each z_i is independently drawn according to some probability measure μ on Ω . We define the structure risk and empirical loss as

$$\mathcal{L}(\theta) = \int_{\Omega} |u_{\theta}(z) - u(z)|^2 d\mu(z), \quad \hat{\mathcal{L}}(\theta, \mathcal{S}) = \frac{1}{N} \sum_{i=1}^N |u_{\theta}(z_i) - u(z_i)|^2, \quad \theta^*(\mathcal{S}) \in \arg \min_{\theta \in \Theta} \hat{\mathcal{L}}(\theta, \mathcal{S}). \quad (49)$$

Lemma A.13. Let $d, L, W \in \mathbb{N}$ with $R \geq 1$, and define $M = \left(\frac{2e^{-rT}}{\sigma^2}\right)^2$. Consider $u_{\theta} : [0, 1]^d \rightarrow \mathbb{R}$, where $\theta \in \Theta$ representing tanh neural networks with at most $L - 1$ hidden layers, each with a width of at most W , and weights and biases bounded by R . Let \mathcal{L}^q and $\hat{\mathcal{L}}^q$ denote the structure risk and empirical error, respectively, for linear general PDEs as in Equation (1). Assume $\max\{\|\varphi\|_{\infty}, \|\psi\|_{\infty}\} \leq \max_{\theta \in \Theta} \|u_{\theta}\|_{\infty}$. Denote by \mathfrak{L}^q the Lipschitz constant of \mathcal{L}^q , for $q = i, t, s$. Then, it follows that

$$\mathfrak{L}^q \leq 2^{5+2L} C (d+7)^2 L^4 R^{6L-1} W^{6L-6},$$

$$\text{where } C = (1+M) \max_{x \in D} \left(1 + \sum_{i=1}^d |\mu(x)_i| + \sum_{i,j=1}^d \left| (\sigma(x) \sigma(x)^*)_{ij} \right| \right)^2.$$

Proof. Similar to Lemma 16 in De Ryck & Mishra (2022), we have the following:

$$\begin{aligned} |\mathcal{R}_i[u_{\theta}](t, x) - \mathcal{R}_i[\Phi^{\vartheta}](t, x)| &\leq |v(x)|_1 |u_{\theta} - \Psi^v|_{\infty} + (1 + |\mu(x)|_1) |J^{\theta} - J^{\vartheta}|_{\infty} + |\sigma(x) \sigma(x)^*|_1 |H_x^{\theta} - H_x^{\vartheta}|_{\infty} \\ &\leq 4\alpha (1 + |v(x)|_1 + |\mu(x)|_1 + |\sigma(x) \sigma(x)^*|_1) (d+7) L^2 R^{3L-1} W^{3L-3} 2^L |\theta - \vartheta|_{\infty}. \end{aligned}$$

And we have

$$|\mathcal{R}_{lie}[u_{\theta}](t, x) - \mathcal{R}_{lie}[\Phi^{\vartheta}](t, x)| \leq M |\mathcal{R}_i[u_{\theta}](t, x) - \mathcal{R}_i[\Phi^{\vartheta}](t, x)|, \quad (50)$$

where we let $\|\cdot\|_p$ denote the vector p -norm of the vectored version of a general tensor. Next, we set $\vartheta = 0$ and $\max\{\|\varphi\|_\infty, \|\psi\|_\infty\} \leq \max_{\theta \in \Theta} \|u_\theta\|_\infty$ for $q = t, s$ that

$$\begin{aligned} \max_{\theta} \|\mathcal{R}_i[u_\theta]\|_\infty &\leq 4\alpha C_1(d+7)2^L L^2 R^{3L} W^{3L-3}, \\ \max_{\theta} \|\mathcal{R}_{lie}[u_\theta]\|_\infty &\leq 4\alpha C_1 M(d+7)2^L L^2 R^{3L} W^{3L-3}, \\ \max_{\theta} \|\mathcal{R}_q[u_\theta]\|_\infty &\leq 2WR, \end{aligned} \quad (51)$$

where $C_1 = \max_{x \in \Omega} (1 + |v(x)|_1 + |\mu(x)|_1 + |\sigma(x)\sigma(x)^*|_1)$. Combining all the previous results yields the bound. \square

We can then obtain the generalization bound of LSN as follows.

Theorem A.14. *Let $L, W, N \in \mathbb{N}$, $R \geq 1$, $L, W \geq 2$, $a, b \in \mathbb{R}$ with $a < b$ and let $u_\theta : [0, 1]^d \rightarrow \mathbb{R}$, $\theta \in \Theta$, be tanh neural networks with at most $L - 1$ hidden layers, width at most W , and weights and biases bounded by R . For $q = i, t, s$, let \mathcal{L}^q and $\hat{\mathcal{L}}^q$ denote the LSN structure risk and training error, respectively, for linear general PDEs as in Equation (1). Let $c_q > 0$ be such that $\hat{\mathcal{L}}^q(\theta, S)$, $\mathcal{L}^q(\theta) \in [0, c_q]$, for all $\theta \in \Theta$ and $S \subset \Omega^N$. Assume $\max\{\|\varphi\|_\infty, \|\psi\|_\infty\} \leq \max_{\theta \in \Theta} \|u_\theta\|_\infty$ and define the constants*

$$C = (1 + M) \max_{x \in \Omega} \left(1 + \sum_{i=1}^d |v(x)_i| + \sum_{i=1}^d |\mu(x)_i| + \sum_{i,j=1}^d |(\sigma(x)\sigma(x)^*)_{ij}| \right)^2.$$

Then, for any $\epsilon > 0$, it holds that

$$\mathcal{L}^q \leq \epsilon + \hat{\mathcal{L}}^q \quad \text{if } M_q \geq \frac{24dL^2W^2c_q^2}{\epsilon^4} \ln \left(4c_1RW \sqrt[6]{\frac{C(d+7)}{\epsilon^2}} \right). \quad (52)$$

Proof. The proof follows the generalization analysis of PINNs (De Ryck & Mishra, 2022). Setting

$$C = (1 + M) \max_{x \in D} \left(1 + \sum_{i=1}^d |v(x)_i| + \sum_{i=1}^d |\mu(x)_i| + \sum_{i,j=1}^d |(\sigma(x)\sigma(x)^*)_{ij}| \right)^2, \quad (53)$$

we can use Lemma A.13 with $a \leftarrow R$, $c \leftarrow c_q$, $\mathfrak{L} \leftarrow 2^{5+2L}C^2(d+7)^2L^4R^{6L-1}W^{6L-6}$ and $k \leftarrow 2dLW^2$ (Lemma A.8). We then arrive at

$$k \ln \left(\frac{4a\mathfrak{L}}{\epsilon^2} \right) + \ln \left(\frac{2c_q}{\epsilon^2} \right) \leq 6kL \ln \left(4c_qRW \sqrt[6]{\frac{C(d+7)}{\epsilon^2}} \right) = 12dL^2W^2 \ln \left(4c_qRW \sqrt[6]{\frac{C(d+7)}{\epsilon^2}} \right).$$

\square